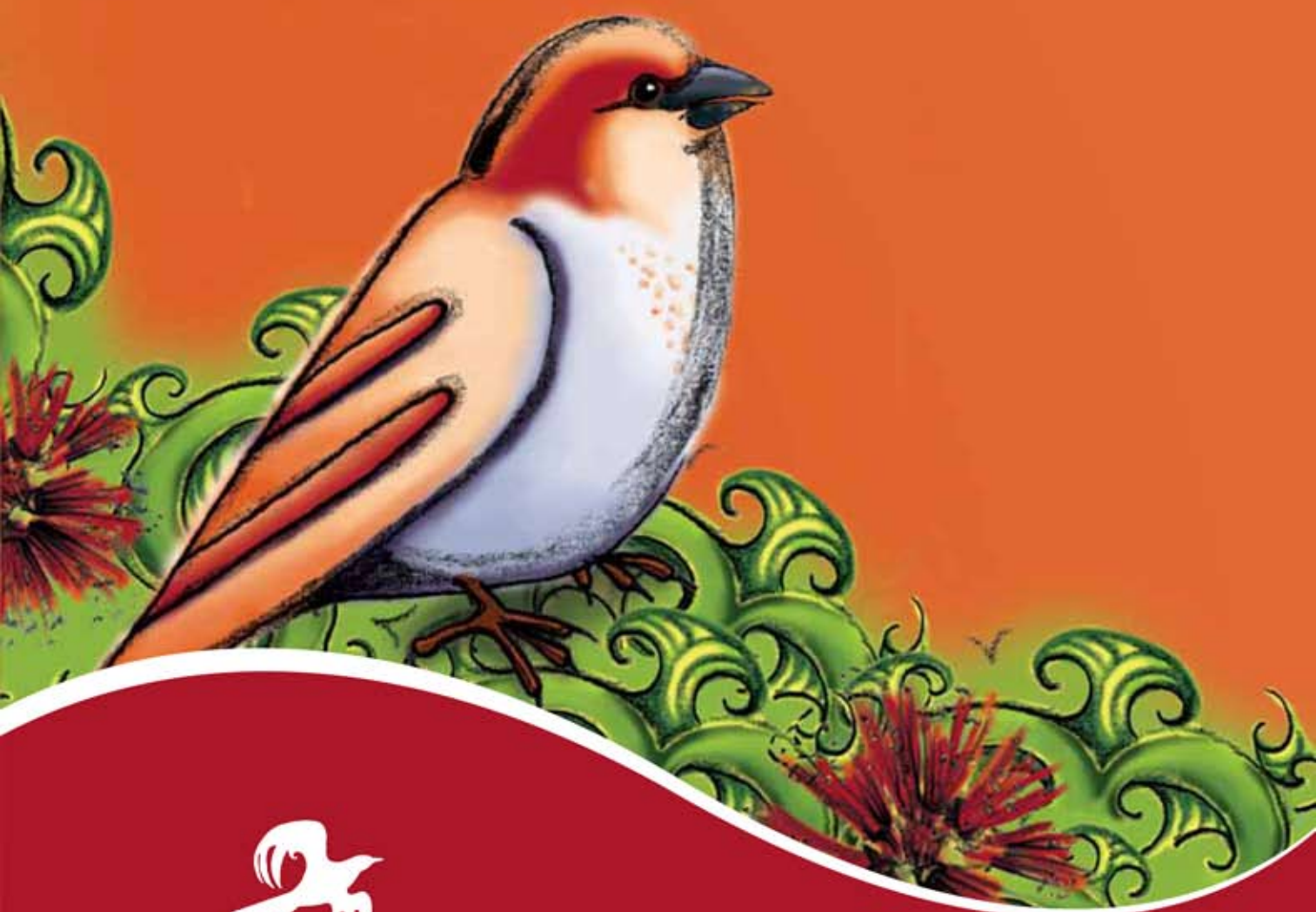


He Kura Tuhituhi

He Tuhinga Tautohe



He Manu Tuhituhi

He Pukapuka Arataki i te Kaituhi

Ngā Ihirangi

Hei Whakamārama	4
Te Pūtake o te Tuhinga Tautohe	5
Ngā Momo Tuhinga Tautohe	6
Te Tautohe Whaiaro	7
He Tautohe Whaiaro hei Tauira	8
Ngā Āhuratanga Reo o te Tautohe Whaiaro	9
Ngā Wāhanga o te Tautohe Whaiaro	12
He Ara Tuhituhi i te Tautohe Whaiaro	15
He Tauira Anō	24
Te Tautohe Whānui	31
He Tautohe Whānui hei Tauira	32
Ngā Āhuratanga Reo o te Tautohe Whānui	33
Ngā Wāhanga o te Tautohe Whānui	36
He Ara Tuhituhi i te Tautohe Whānui	39
He Tauira Anō	50
He Mahere Ārahi i te Tuhituhi	57
Ngā Tauira Tuhinga	60
Te Kuputaka	68
Ngā Tohutoro	69
Te Matapaki	70
Te Tukanga Tuhituhi	72

Hei Whakamārama

He pukapuka tēnei mā te kaiako, mā te ākongā hoki, he pukapuka āwhina i ngā akoranga tuhituhi tautohe.

Ki te kaiako,

Ko te tikanga māu tēnei pukapuka e whakamahi. Māu te wāhanga o te pukapuka me te tauira tuhinga e whiriwhiri e hāngai ana ki te momo akoranga, ngā mōhiotanga me ngā pūkenga o ngā ākongā.

Te pūtake o tēnei pukapuka

Ko te pūtake o te pukapuka nei he whakaatu i:

- Te pūtake o te tuhinga tautohe
- Ngā āhuatanga reo o te tuhinga tautohe
- Tētahi ara tuhituhi
- Ngā momo tuhinga tautohe
- Ngā wāhanga o te tuhinga tautohe

He tuhinga hei tauira¹

Kua whakaaturia tētahi tauira tuhinga mō ia momo tuhinga tautohe. Kua whakaaturia ōna āhuatanga reo me ōna wāhanga. Kua whāia hoki e te kaituhi tētahi ara tuhituhi hei tuhi i tāna tauira tuhinga. Ko te pūtake o te ara tuhituhi he āwhina i ngā ākongā ki te tīmata ki te takahi i te ara tuhituhi tautohe. Ko te whāinga kia whārikihia te tūāpapa mō ngā āhuatanga reo me ngā wāhanga o te tuhinga tautohe.



Te matapaki

Ka kite koe i te weka i ētahi whārangi o te ara tuhituhi. Ko te putanga o te weka he tohu whakamaumahara mā te matapaki ka oti pai ai tēnei wāhanga o te tuhinga. Mā te whakawhitiwhiti kōrero, mā te āta pātaitai a te kaiako e āwhinatia ai te ākongā kia whanake ōna pūkenga tuhituhi. Kei muri i tēnei pukapuka he whārangi e whakaatu ana i ngā huarahi matapaki, ngā momo matapaki me ētahi pātai hei āwhina i te kaituhi.

Te tukanga tuhituhi

Kua whakaaturia tētahi tukanga tuhituhi ki muri i tēnei pukapuka. Ko te tikanga kia toro haere te kaituhi ki ngā wāhanga o te tukanga nei kia pai ai te takoto o tāna tuhinga.

He tauira anō

Ko ngā tauira anō hei whakaatu i te whanaketanga o ngā āhuatanga reo, ngā tikanga tuhituhi me ngā kupu mō te tuhinga tautohe. Whiriwhiria te tauira e hāngai ana ki ngā pūkenga me ngā mōhiotanga o ngā ākongā hei whakaakoranga.

Me pēhea te whakamahi i tēnei pukapuka?

Ko te mea nui, i te tīmatanga māu ēnei momo tuhinga e whakaatu, e whakaako hoki mā te **huarahi whakaako tuhituhi ngātahi**. Whai muri, ka mahia mā te **huarahi whakaako tuhituhi me te arahanga**, tae noa ki te wā ka taea e te ākongā te mahi mā te **huarahi whakaako tuhituhi takitahi**.²

Ko te mahere e whai nei hei āwhina i a koe ki te tāutu i te huarahi whakaako tuhituhi e tika ana mō ngā ākongā:

Ngā Reanga³ o He Ara Rēre me ngā Huarahi Whakaako

	Te Huarahi Whakaako Tuhituhi Ngātahi	Te Huarahi Whakaako Tuhituhi me te Arahanga	Te Huarahi Whakaako Tuhituhi Takitahi
Ka Oho	Te tautohe whaiaro		
Ka Whai Huru	Te tautohe whaiaro		
Ka Marewa	Te tautohe whaiaro		
Ka Rere	Te tautohe whānui	Te tautohe whaiaro Te tautohe whānui	Te tautohe whaiaro Te tautohe whānui

¹ Kei muri i tēnei pukapuka he kape o ngā tauira tuhinga katoa. Ka taea ēnei whārangi te tārua.

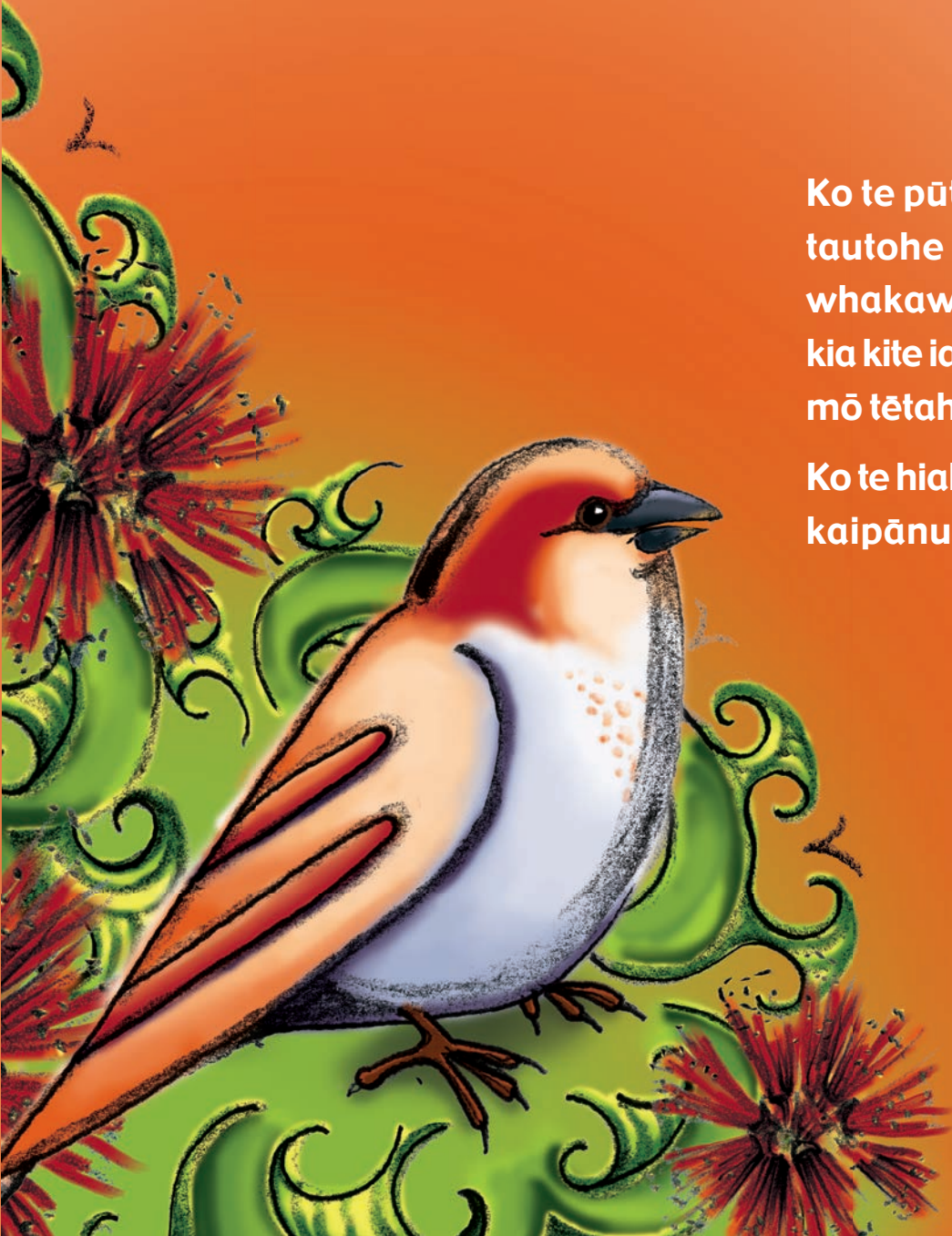
² Tirohia te pukapuka aratohu mā te kaiako *Ka Rere te Manu ki te Ao Tuhituhi*, Te Wāhanga Tuatoru, mō te whakamāramatanga o ēnei huarahi e toru mō te whakaako tuhituhi.

³ Tirohia te pukapuka aratohu mā te kaiako *Ka Rere te Manu ki te Ao Tuhituhi*, Te Wāhanga Tuatoru, mō ngā āhuatanga o ngā ākongā kei ngā reanga 'Ka Oho', 'Ka Whai Huru', 'Ka Marewa', 'Ka Rere'.

Te Pūtake o te Tuhinga Tautohe

Ko te pūtake o te tuhinga
tautohe he tautohe, he
whakawhere i te kaipānui
kia kite ia i tāu ake tirohanga
mō tētahi take.

Ko te hiahia kia whakaae te
kaipānui ki tāu tirohanga.



Ngā Momo Tuhinga Tautohe

Ka tirohia ēnei momo tuhinga tautohe e rua:



1. Te tautohe whaiaro
2. Te tautohe whānui

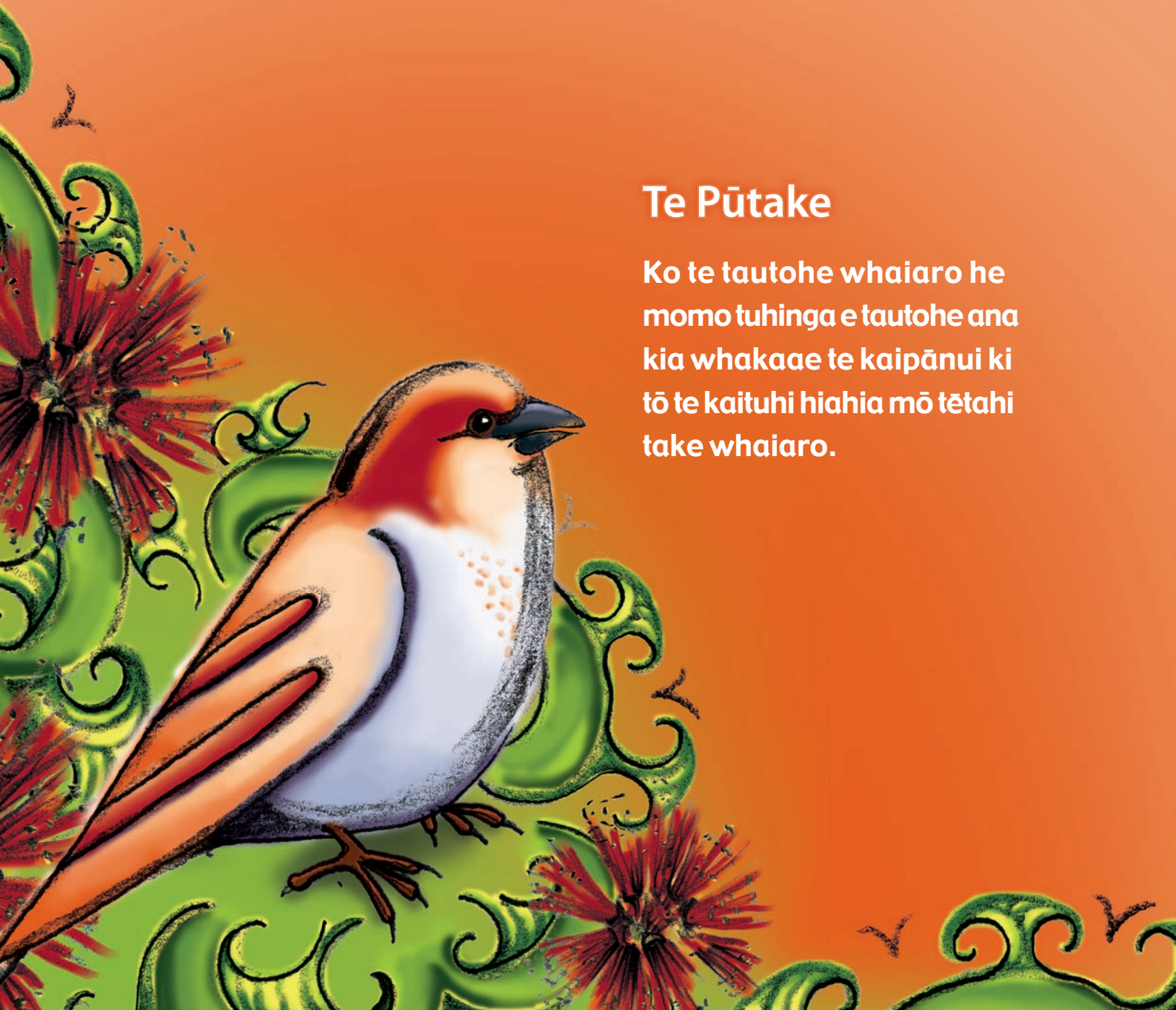
Hei whakataurite i te tautohe whaiaro me te tautohe whānui

	Te Whakamāramatanga	Te Wāhi o te Kaituhi i roto i te Tautohe
Te Tautohe Whaiaro	He momo tuhinga e tautohe ana kia whakaae te kaipānui ki tō te kaituhi hiahia mō tētahi take whaiaro.	Kei te whakaatu te kaituhi i ngā pānga o te take ki a ia anō, nō reira ka whakamahi ia i te reo tautahi , pēnei i ‘au’, ‘māua’, ‘mātou’, ‘tōku’, ‘tā mātou’. Hei tauira: Tuatahi, mā te whiwhi kurī ka ako au ki te āta tiaki i a ia. He akoranga nui tērā mōku . Koirā au ka tuhi reta ki a koe, kia whakaae mai koe ki tōku tino hiahia ki te whiwhi kurī hei mōkai mōku .
Te Tautohe Whānui	He momo tuhinga e tautohe ana kia whakaae te kaipānui ki tā te kaituhi tirohanga mō tētahi take nui.	Kei te tuhi te kaituhi ānō nei kei te whakaatu ia i ngā pānga o te take ki ētahi atu, nō reira ko te nuinga o te tuhinga i roto i te reo tohu i te mahi a tētahi atu (te reo tautoru), pēnei i ‘ngā ākongā’, ‘rātou’, ‘ngā mātua’, ‘te tamaiti’. Hei tauira: I te tuatahi, ka ako te tamaiti ki te tiaki i tētahi mea koiora. He maha ngā mihini i tenei ao hurihuri. Ki te kore te tamaiti e tiaki mōkai, ka pēhea ia e ako ai ki te tiaki i ngā mea koiora?

Te Tautohe Whaiaro

Te Pūtake

Ko te tautohe whaiaro he momo tuhinga e tautohe ana kia whakaae te kaipānui ki tō te kaituhi hiahia mō tētahi take whaiaro.



He Tautohe Whaiaro hei Taurira



Ka whakaatu au i te tautohe whaiaro kua tuhia e Hana mō tōna hiahia ki te whiwhi kurī.

Ka whakaaturia:

- Ngā āhuetanga reo
- Ngā wāhanga
- Te ara tuhituhi i whāia e Hana

Tirohia tāna tuhinga:

Tēnā e Māmā,

E mōhio ana ahau kāore koe e tino whakaae i tēnei wā kia whiwhi kurī au. Koirā au ka tuhi reta ki a koe, kia whakaae mai koe ki tōku tino hiahia ki te whiwhi kurī hei mōkai mōku.

Tuatahi, mā te whiwhi kurī ka ako au ki te āta tiaki i a ia. He akoranga nui tērā mōku.

Tuarua, ka hīkoi tahi māua ia rā, ia rā kia pakari haere tōna tinana me tōku hoki.

Tuatoru, ko te kurī te tino hoa o ngā hoa mōku. Ka korikori tahi māua, ka tiaki māua i a māua anō i te wā o te pōuri, ka hāereere tahi hoki māua ki wī, ki wā.

Nō reira, ka mutu, ki ahau nei he maha ngā painga o te whiwhi kurī. He painga mōku, he painga mōna, ā, ki te whakaae mai koe, kāore e kore he painga hoki mō te whānau. Ka taea e au Māmā, nē i?

Aroha nui,
Nā Hana

Ngā Āhuatanga Reo o te Tautohe Whaiaro



Ka tirohia ētahi o ngā āhuatanga reo o te tautohe whaiaro:

- Te reo tautahi
- Te reo raupapa
- Te reo tūhono i te take me te pānga
- Te reo whakaputa whakaaro
- Te reo whakakapi

Tirohia ngā whārangi e whai ake nei.

Te Whakamāramatanga o ngā Āhuatanga Reo

Te reo tautahi

Kei te whakaatu te kaituhi i ngā pānga o tētahi take ki a ia anō, nō reira ka whakamahi ia i te reo tautahi, arā, i ngā tūpou tautahi me ngā pūriro tautahi.

Te tūpou tautahi

Ko ēnei ngā tūpou tautahi: **au/ahau, māua, mātou, tāua, tātou.**

Hei tauira:

Tuatahi, mā te whiwhi kurī ka ako **au** ki te āta tiaki i a ia.

Ka korikori tahi **māua**.

Te pūriro tautahi

Ko ēnei ētahi o ngā pūriro tautahi: **taku/tāku/tōku, tā/tō māua, ā/ō tātou, mōku, nōku.**

Hei tauira:

Koirā au ka tuhi reta ki a koe, kia whakaae mai koe ki **tōku** hiahia ki te whiwhi kurī hei mōkai **mōku**.

Te reo raupapa

Ko tā tēnei reo he tohu kei te whai mai tētahi āhuatanga i tētahi, kia mārama te raupapa o ngā mahi, o ngā ariā rānei. Mā tēnei reo **ka whakaraupapa te kaituhi i ngā tohenga** o tāna tuinga.

Hei tauira:

Tuatahi, mā te whiwhi kurī ka ako au ki te āta tiaki i a ia. He akoranga nui tērā mōku.

Tuarua, ka hīkoi tahi māua ia rā, ia rā kia pakari haere tōna tinana me tōku hoki.

Te reo tūhono i te take me te pānga

Ko tā tēnei reo he tohu i **te tūhonotanga o tētahi āhuatanga me te take i puta ai taua āhuatanga**.

Hei tauira:

Koirā au ka tuhi reta ki a koe.

Te reo whakaputa whakaaro

Ko tā tēnei reo **he whakamōhio atu ki te kaipānui nō wai te whakaaro**.

Hei tauira:

Ki ahau nei he maha ngā painga o te whiwhi kurī.

Te reo whakakapi

Ko tā tēnei reo he whakataki i te whakakapinga.

Hei tauira:

Nō reira, ka mutu, ki ahau nei he maha ngā painga o te whiwhi kurī.



*Tirohia ngā āhuatanga reo
kua whakamahia e Hana i tōna
tautohe whaiaro.*

Te reo tautahi

ahau/au
māua

tōku
mōku

Te reo raupapa

Tuatahi
Tuarua
Tuatoru

**Te reo tūhono i te take me
te pānga**

Koirā au ka tuhi reta ki a koe

**Te reo whakaputa
whakaaro**

ki ahau nei

Te reo whakakapi

Nō reira, ka mutu

Tēnā e Māmā,

E mōhio ana ahau kāore koe e tino whakaae i tēnei wā kia whiwhi kurī au. Koirā au ka tuhi reta ki a koe, kia whakaae mai koe ki tōku tino hiahia ki te whiwhi kurī hei mōkai mōku.

Tuatahi, mā te whiwhi kurī ka ako au ki te āta tiaki i a ia. He akoranga nui tērā mōku.

Tuarua, ka hīkoi tahi māua ia rā, ia rā kia pakari haere tōna tinana me tōku hoki.

Tuatoru, ko te kurī te tino hoa o ngā hoa mōku. Ka korikori tahi māua, ka tiaki māua i a māua anō i te wā o te pōuri, ka hāereere tahi hoki māua ki wī, ki wā.

Nō reira, ka mutu, ki ahau nei he maha ngā painga o te whiwhi kurī. He painga mōku, he painga mōna, ā, ki te whakaae mai koe, kāore e kore he painga hoki mō te whānau. Ka taea e au Māmā, nē i?

Aroha nui,
Nā Hana

Ngā Wāhanga o te Tautohe Whaiaro



E toru ngā wāhanga o te tautohe whaiaro:

1. Te whakatakotoranga take
2. Te tautohenga
3. Te whakakapinga

Tirohia ngā whārangi e whai ake nei.

Te Whakamāramatanga o ngā Wāhanga

Te whakatakotoranga take

Hei tāpae atu ki te kaipānui i:

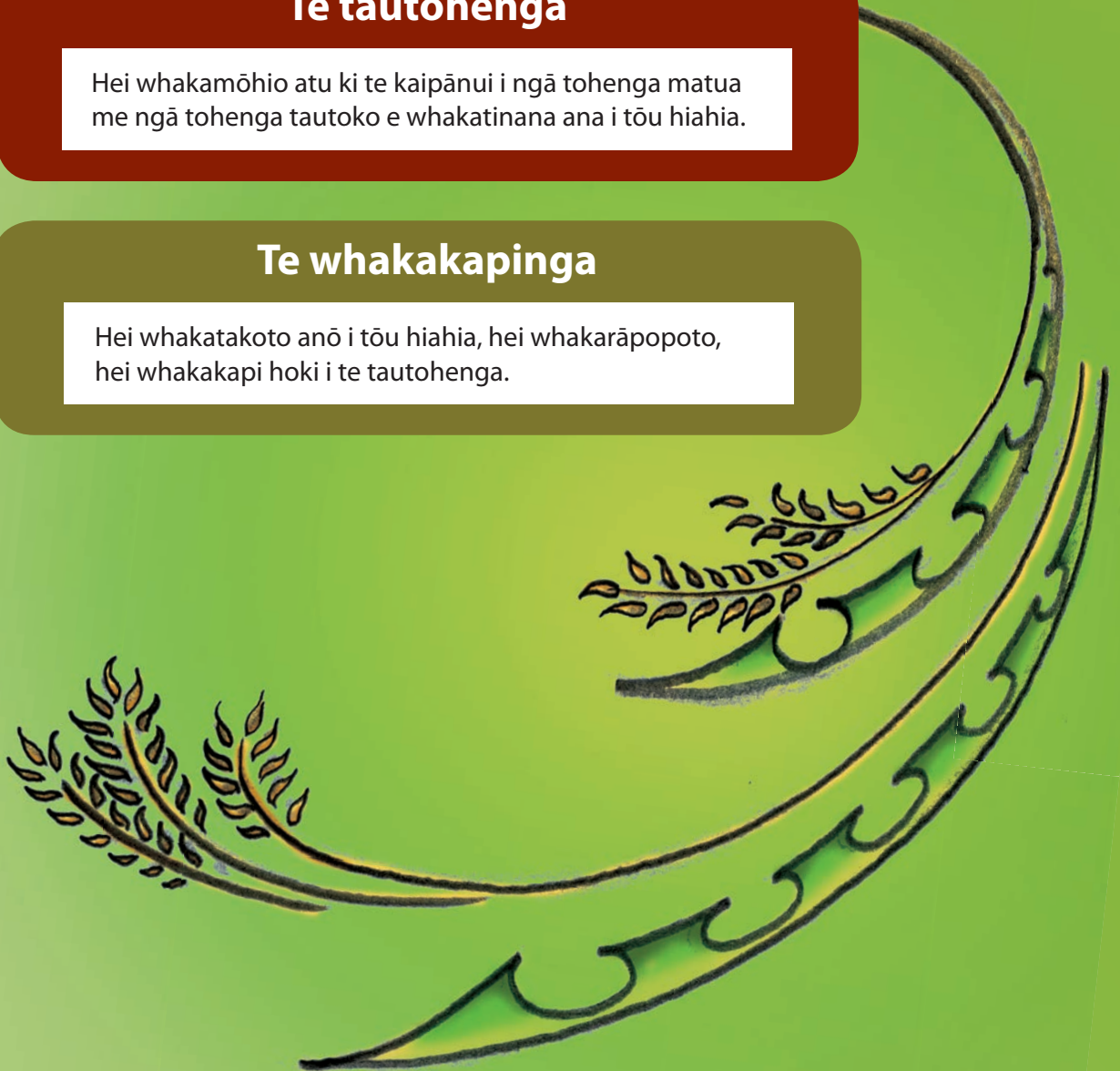
- Te take o te tautohe
- Tōu hiahia

Te tautohenga

Hei whakamōhio atu ki te kaipānui i ngā tohenga matua me ngā tohenga tautoko e whakatinana ana i tōu hiahia.

Te whakakapinga

Hei whakatakoto anō i tōu hiahia, hei whakarāpopoto, hei whakakapi hoki i te tautohenga.





Tirohia ngā wāhanga e toru
o te tautohe whaiaro a Hana.

Te whakatakotoranga take

Tēnā e Māmā,

E mōhio ana ahau kāore koe e tino whakaae i tēnei wā
kia whiwhi kurī au. Koirā au ka tuhi reta ki a koe, kia
whakaae mai koe ki tōku tino hiahia ki te whiwhi kurī
hei mōkai mōku.

Te tautohenga

Tuatahi, mā te whiwhi kurī ka ako au ki te āta tiaki i a ia.
He akoranga nui tērā mōku.

Tuarua, ka hīkoi tahi māua ia rā, ia rā kia pakari haere
tōna tinana me tōku hoki.

Tuatoru, ko te kurī te tino hoa o ngā hoa mōku. Ka
korikori tahi māua, ka tiaki māua i a māua anō i te wā
o te pōuri, ka hāereere tahi hoki māua ki wī, ki wā.

Te whakakapinga

Nō reira, ka mutu, ki ahau nei he maha ngā painga o te
whiwhi kurī. He painga mōku, he painga mōna, ā, ki te
whakaae mai koe, kāore e kore he painga hoki mō te
whānau. Ka taea e au Māmā, nē i?

Aroha nui,
Nā Hana

He Ara Tuhituhi i te Tautohe Whaiaro

Ko te ara tuhituhi e whai ake nei hei āwhina i te kaituhi ki te whakarite me te whakatakoto i ngā wāhanga o te tuhinga.

E whā ngā wāhanga o tēnei ara tuhituhi:

1. Te whakarite i te horopaki o te tuhinga

Te whakarite me te tuhituhi i:

2. Te whakatakotoranga take
3. Te tautohenga
4. Te whakakapinga

Kia mahara ake – kia tutuki pai ai te mahi tuhituhi, me matapaki ia wāhanga o te ara e te kaituhi mā tētahi huarahi matapaki.

He Ara Tuhituhi

Te horopaki

Whakaarohia:

1. Te pūtake
2. Ngā kaipānui
3. Te momo tuhinga
4. Te tapanga

Te whakatakotoranga take

- Whakatakotoria te take
- Tāpaetia tōu hiahia

Te tautohenga

- Kohia ngā tohenga
- Whakaritea ngā tohenga matua me ngā tohenga tautoko
- Tuhia te tautohenga

Te whakakapinga

- Whakatakotoria anō tōu hiahia
- Tuhia he whakaaro hei whakarāpopoto, hei whakakapi hoki i te tautohenga

I whai a Hana i tēnei ara hei tuhituhi i tāna tautohe whaiaro mō tōna hiahia ki te whiwahi kurī. Tirohia ngā whārangi e whai ake nei.



Te Horopaki



Ko te mahi tuatahi mā te kaituhi, ko te whakaaro ki te horopaki o tāna tuhinga.

Ka whakautu ia i ēnei pātai:

1. He aha te pūtake o te tuhinga?
2. Mā wai te tuhinga?
3. He aha te momo tuhinga?
4. He aha tētahi tapanga mō te tuhinga?

Tirohia ngā whakautu a Hana ki ngā pātai mō te horopaki o tāna tuhinga. Ka tuhi reta ia, nō reira kāore ia e tuhi i te tapanga.



- | | |
|----------------------------|---|
| 1. Te pūtake: | He whakawhere i a Māmā kia whiwhi kurī au |
| 2. Te kaipānuī: | Tōku māmā |
| 3. Te momo tuhinga: | He tautohe whaiaro, he reta |

Te Whakatakotoranga Take



Ka huri a Hana i nāiane i ki te whakarite i te whakatakotoranga take o tāna tuhinga. Ka whakautu i ēnei pātai e rua, kātahi ka āta tuhituhi hei rerenga tuhituhi.

1. He aha te take?

Kāore a Māmā e whakaae ki tōku hiahia

2. He aha tōku hiahia?

Ki te whiwhi kurī



Te mihi tuatahi o te reta

Tēnā e Māmā,

E mōhio ana ahau kāore koe e tino whakaae i tēnei wā kia whiwhi kurī au. Koirā au ka tuhi reta ki a koe, kia whakaae mai koe ki tōku tino hiahia ki te whiwhi kurī hei mōkai mōku.

Te take

Te hiahia

Te whakatakotoranga take

Te tautohenga

Te whakakapinga

Te Tautohenga

Ka huri a Hana ki te whakarite i te tautohenga.
I te tuatahi, ka kohi ia i ana tohenga.
I te tuarua, ka whakaraupapa ia i ngā tohenga.



Kohia ngā tohenga

Mā te ohia manomano ka kohi whakaaro a
Hana, ā, ka whakataui ia i ngā tohenga matua
hei tautoko i tōna hiahia ki te whiwhi kuri.

*ka tiaki au
i te kuri*

*he tino
hoa mōku*

Te whiwhi kuri

ka hikoi tahi māua



Whakaritea ngā tohenga



Kātahi ka whakatakoto a Hana i ngā tohenga matua me ētahi tohenga hei tautoko i ngā tohenga matua.



Te hiahia —————→ *Ki te whiwhi kuri.*

Te tohenga matua —————→ *Ka ako au ki te tiaki i te kuri.*

Te tohenga tautoko —————→ *He akoranga nui mōku.*

Te tohenga matua —————→ *Ka hīkoi tahi māua, ia rā.*

Te tohenga tautoko —————→ *Ka pakari haere ngā tinana.*

Te tohenga matua —————→ *Ko te kuri te tino hoa mōku.*

Te tohenga tautoko —————→ *Ka tākaro tahi māua.*

Tuhia te tautohenga



Whai muri mai ka huri a Hana ki te tuhi i te tautohenga. Ko te rerenga tuatahi o ia kōwae he tohenga matua. E whai ana ngā tohenga tautoko. Ka whakaraupapahia ngā tohenga matua ki te reo raupapa.

Tuatahi, mā te whiwhi kurī ka ako au ki te āta tiaki i a ia.

He akoranga nui tērā mōku.

Tuarua, ka hīkoi tahi māua ia rā, ia rā kia pakari haere tōna tinana me tōku hoki.

Tuatoru, ko te kurī te tino hoa o ngā hoa mōku. Ka korikori tahi māua, ka tiaki māua i a māua anō i te wā o te pōuri, ka hāereere tahi hoki māua ki wī, ki wā.

Te whakatakotoranga take

Te tautohenga

Te whakakapinga

Te Whakakapinga



Hei whakakapi i tāna tuhinga,
ka whakatakoto anō a Hana i tōna hiahia,
ka whakarāpopoto hoki i tāna tautohenga.

Tōna hiahia

Nō reira, ka mutu, ki ahau nei he maha ngā painga o te whiwhi kurī. He painga mōku, he painga mōna, ā, ki te whakaae mai koe, kāore e kore he painga hoki mō te whānau. Ka taea e au Māmā, nē i?

Te whakarāpopotonga

Te mihi whakakapi i te reta

Aroha nui,
Nā Hana

Ētahi kupu whakapati i tōna māmā

Te whakatakotoranga take

Te tautohenga

Te whakakapinga

Te Tautohe Whaiaro a Hana



Tirohia ngā wāhanga katoa o te tuhinga a Hana.

Tēnā e Māmā,

E mōhio ana ahau kāore koe e tino whakaae i tēnei wā kia whiwhi kurī au. Koirā au ka tuhi reta ki a koe, kia whakaae mai koe ki tōku tino hiahia ki te whiwhi kurī hei mōkai mōku.

Tuatahi, mā te whiwhi kurī ka ako au ki te āta tiaki i a ia. He akoranga nui tērā mōku.

Tuarua, ka hīkoi tahi māua ia rā, ia rā kia pakari haere tōna tinana me tōku hoki.

Tuatoru, ko te kurī te tino hoa o ngā hoa mōku. Ka korikori tahi māua, ka tiaki māua i a māua anō i te wā o te pōuri, ka hāereere tahi hoki māua ki wī, ki wā.

Nō reira, ka mutu, ki ahau nei he maha ngā painga o te whiwhi kurī. He painga mōku, he painga mōna, ā, ki te whakaae mai koe, kāore e kore he painga hoki mō te whānau. Ka taea e au Māmā, nē i?

Aroha nui,
Nā Hana

He Taurira Anō

Ko ngā taurira anō hei whakaatu i te whanaketanga o ngā āhuetanga reo, ngā tikanga tuhituhi me ngā kupu mō te tautohe whaiaro.

Ka tirohia te tuhinga, ngā āhuetanga reo me ngā wāhanga o ēnei taurira tuhinga.



He Tautohe Whaiaro hei Taurira



*Ki a Anihera mā kāore i te pai ō rātou
kākahu-ā-kura, nō reira ka tuhi reta rātou
hei whakawhere i te poari whakahaere o te
kura mē tīni ngā kākahu.*

Tēnā koutou e te poari whakahaere o te kura,

Ko ngā kākahu-ā-kura te kaupapa o tā mātou reta. Kua kōrero mātou mō te āhua o ō mātou nei kākahu-ā-kura. Ki a mātou nei, me tīni ngā kākahu-ā-kura.

I te tuatahi, kāore i te pai ngā kākahu hei te wā o te raumati. He āhua mātotoru te papanga, ā, ka heke te werawera. He uaua mā mātou ki te tiaki i ō mātou tinana.

I te tuarua, kāore he pai ngā tae o ngā kākahu. Kua tino hōhā mātou ki te kiwikiwi me te parauri. E hiahia ana mātou ki tētahi tae ātaahua hei hāpai ake i ō mātou wairua.

Heoi anō, e te poari whakahaere, ko tō mātou hiahia kia tīnīhia te āhua o ngā kākahu-ā-kura, i te mea kāore i te pai ki a mātou te papanga me ngā tae. Ko te tūmanako ka whai wā tātou ki te kōrero kanohi ki te kanohi mō tēnei kaupapa.

Noho ora mai,

Nā mātou ko Anihera Baker, ko Erena Hurae, ko Alicia Hohepa

Ngā Āhuratanga Reo



*Tirohia ngā āhuratanga reo
kua whakamahia e Anihera mā
i tā rātou tautohe whaiaro.*

Te reo tautahi

mātou
tātou

tā mātou



Te reo raupapa

I te tuatahi
I te tuarua



Te reo tūhono i te take me te pānga

i te mea



Te reo whakaputa whakaaro

Ki a mātou nei



Te reo whakakapi

Heoi anō

Tēnā koutou e te poari whakahaere o te kura,

Ko ngā kākahu-ā-kura te kaupapa o tā mātou reta. Kua kōrero mātou mō te āhua o ō mātou nei kākahu-ā-kura. Ki a mātou nei, me tīni ngā kākahu-ā-kura.

I te tuatahi, kāore i te pai ngā kākahu hei te wā o te raumati. He āhua mātotoru te papanga, ā, ka heke te werawera. He uaua mā mātou ki te tiaki i ō mātou tinana.

I te tuarua, kāore he pai ngā tae o ngā kākahu. Kua tino hōhā mātou ki te kiwikipi me te parauri. E hiahia ana mātou ki tētahi tae ātaahua hei hāpai ake i ō mātou wairua.

Heoi anō, e te poari whakahaere, ko tō mātou hiahia kia tīnīhia te āhua o ngā kākahu-ā-kura, i te mea kāore i te pai ki a mātou te papanga me ngā tae. Ko te tūmanako ka whai wā tātou ki te kōrero kanohi ki te kanohi mō tēnei kaupapa.

Noho ora mai,

Nā mātou ko Anihera Baker, ko Erena Hurae, ko Alicia Hohepa

Tirohia te whārangi 10 mō te whakamāramatanga o ēnei āhuratanga reo.

Ngā Wāhanga



Tirohia ngā wāhanga e toru
o te tautohe whaiaro a Anihera mā.

Te whakatakotoranga take

Tēnā koutou e te poari whakahaere o te kura,
Ko ngā kākahu-ā-kura te kaupapa o tā mātou reta. Kua kōrero
mātou mō te āhua o ō mātou nei kākahu-ā-kura. Ki a mātou
nei, me tīni ngā kākahu-ā-kura.

Te tautohenga

I te tuatahi, kāore i te pai ngā kākahu hei te wā o te raumati.
He āhua mātotoru te papanga, ā, ka heke te werawera. He
uaua mā mātou ki te tiaki i ō mātou tinana.

I te tuarua, kāore he pai ngā tae o ngā kākahu. Kua tino hōhā
mātou ki te kiwikiwi me te parauri. E hiahia ana mātou ki
tētahi tae ātaahua hei hāpai ake i ō mātou wairua.

Te whakakapinga

Heoi anō, e te poari whakahaere, ko tō mātou hiahia kia
tīnīhia te āhua o ngā kākahu-ā-kura, i te mea kāore i te pai
ki a mātou te papanga me ngā tae. Ko te tūmanako ka whai
wā tātou ki te kōrero kanohi ki te kanohi mō tēnei kaupapa.

Noho ora mai,
Nā mātou ko Anihera Baker, ko Erena Hurae, ko Alicia
Hohepa

Tirohia te whārangi 13 mō te whakamāramatanga o ēnei wāhanga.

He Tautohe Whaiaro hei Taurira



I te rongonga e mea ana te kaunihera o te tāone ki te turaki i te pāka kei tōna tiriti hei hanga whare hou ka pā pōuri a Reweti. Ka tuhi reta ia hei whakawhere i te kaunihera kia kore e turakina ai te pāka.

Tēnā koutou e te Kaunihera,

E tuhi ana ahau i tēnei reta ki te whakamōhio atu i a koutou mō tōku hiahia kia tū tonu te pāka kei te tiriti o Rākaunui. I kōrero mai tō mātou kaiako e hiahia ana koutou ki te turaki i te pāka kia hangaia he whare hou. Ko tāku ki a koutou kia tū tonu te pāka.

Ko te tuatahi, kāore au e whakaae ki tō koutou hiahia, nā te mea mō mātou, mō ngā tamariki o te tiriti o Rākaunui, tērā pāka. Ia rā, ia rā ka haere atu mātou ko ōku hoa ki te pāka tākaro ai. He wāhi pai, he wāhi haumaruru hoki. Ki te turaki koutou i te pāka, ki hea mātou tākaro ai?

Ko te tuarua, kāore he nui ngā wāhi tākaro kei tō mātou nei wāhi noho, engari he nui ngā wāhi mō te hanga whare. E mea ana ahau nā te rahi o te whenua e wātea ana ki te whakatū whare, korekau he take kia turaki i te pāka mō taua whenua anō rā.

Ko te tuatoru, he tangata noho hapori mātou o te tiriti nei, he kaha nō mātou ki te mahi tahi, ki te whakangahau tahi, ki te korikori tahi hoki kia pai ai tō mātou noho ki a mātou anō. He wāhi pai te pāka mō te tūtaki atu mātou i a mātou, ngā tāngata o te tiriti o Rākaunui. Ki ahau nei, ki te kore te pāka e tū tonu ka memeha haere ngā āhuatanga o te noho tahi me te mahi tahi o tēnei hapori.

Heoti anō rā, ko tāku inoi ki a koutou kia tū tonu te pāka i te tiriti o Rākaunui hei wāhi tākaro haumaruru mō mātou, mō ngā tamariki nō te tiriti o Rākaunui.

Nāku noa,
nā Reweti Haimona

Ngā Āhuatanga Reo



*Tirohia ngā āhuatanga reo
kua whakamahia e Reweti i tāna
tautohe whaiaro.*

Te reo tautahi

ahau/au
mātou

tōku
tāku
ōku
tō mātou

Te reo raupapa

Ko te tuatahi
Ko te tuarua
Ko te tuatoru

Te reo tūhono i te take me te pānga

nā te mea
nā te

Te reo whakaputa whakaaro

Ko tāku ki a koutou
Ki ahau nei

Te reo whakakapi

Heoti anō rā

Tēnā koutou e te Kaunihera,

E tuhi ana ahau i tēnei reta ki te whakamōhio atu i a koutou mō tōku hiahia kia tū tonu te pāka kei te tiriti o Rākaunui. I kōrero mai tō mātou kaiako e hiahia ana koutou ki te turaki i te pāka kia hangaia he whare hou. Ko tāku ki a koutou kia tū tonu te pāka.

Ko te tuatahi, kāore au e whakaae ki tō koutou hiahia, nā te mea mō mātou, mō ngā tamariki o te tiriti o Rākaunui, tērā pāka. Ia rā, ia rā ka haere atu mātou ko ōku hoa ki te pāka tākaro ai. He wāhi pai, he wāhi haumaruru hoki. Ki te turaki koutou i te pāka, ki hea mātou tākaro ai?

Ko te tuarua, kāore he nui ngā wāhi tākaro kei tō mātou nei wāhi noho, engari he nui ngā wāhi mō te hanga whare. E mea ana ahau nā te rahi o te whenua e wātea ana ki te whakatū whare, korekau he take kia turaki i te pāka mō taua whenua anō rā.

Ko te tuatoru, he tangata noho hapori mātou o te tiriti nei, he kaha nō mātou ki te mahi tahi, ki te whakangahau tahi, ki te korikori tahi hoki kia pai ai tō mātou noho ki a mātou anō. He wāhi pai te pāka mō te tūtaki atu mātou i a mātou, ngā tāngata o te tiriti o Rākaunui. Ki ahau nei, ki te kore te pāka e tū tonu ka memeha haere ngā āhuatanga o te noho tahi me te mahi tahi o tēnei hapori.

Heoti anō rā, ko tāku inoi ki a koutou kia tū tonu te pāka i te tiriti o Rākaunui hei wāhi tākaro haumaruru mō mātou, mō ngā tamariki nō te tiriti o Rākaunui.

Nāku noa,
nā Reweti Haimona

Tirohia te whārangi 10 mō te whakamāramatanga o ēnei āhuatanga reo.



Ngā Wāhanga

Tirohia ngā wāhanga e toru
o te tautohe whaiaro a Reweti.

Te whakatakotoranga take

Tēnā koutou e te Kaunihera,

E tuhi ana ahau i tēnei reta ki te whakamōhio atu i a koutou mō tōku hiahia kia tū tonu te pāka kei te tiriti o Rākaunui. I kōrero mai tō mātou kaiako e hiahia ana koutou ki te turaki i te pāka kia hangaia he whare hou. Ko tāku ki a koutou kia tū tonu te pāka.

Te tautohenga

Ko te tuatahi, kāore au e whakaae ki tō koutou hiahia, nā te mea mō mātou, mō ngā tamariki o te tiriti o Rākaunui, tērā pāka. Ia rā, ia rā ka haere atu mātou ko ōku hoa ki te pāka tākaro ai. He wāhi pai, he wāhi haumaruru hoki. Ki te turaki koutou i te pāka, ki hea mātou tākaro ai?

Ko te tuarua, kāore he nui ngā wāhi tākaro kei tō mātou nei wāhi noho, engari he nui ngā wāhi mō te hanga whare. E mea ana ahau nā te rahi o te whenua e wātea ana ki te whakatū whare, korekau he take kia turaki i te pāka mō taua whenua anō rā.

Ko te tuatoru, he tangata noho hapori mātou o te tiriti nei, he kaha nō mātou ki te mahi tahi, ki te whakangahau tahi, ki te korikori tahi hoki kia pai ai tō mātou noho ki a mātou anō. He wāhi pai te pāka mō te tūtaki atu mātou i a mātou, ngā tāngata o te tiriti o Rākaunui. Ki ahau nei, ki te kore te pāka e tū tonu ka memeha haere ngā āhuatanga o te noho tahi me te mahi tahi o tēnei hapori.

Te whakakapinga

Heoti anō rā, ko tāku inoi ki a koutou kia tū tonu te pāka i te tiriti o Rākaunui hei wāhi tākaro haumaruru mō mātou, mō ngā tamariki nō te tiriti o Rākaunui.

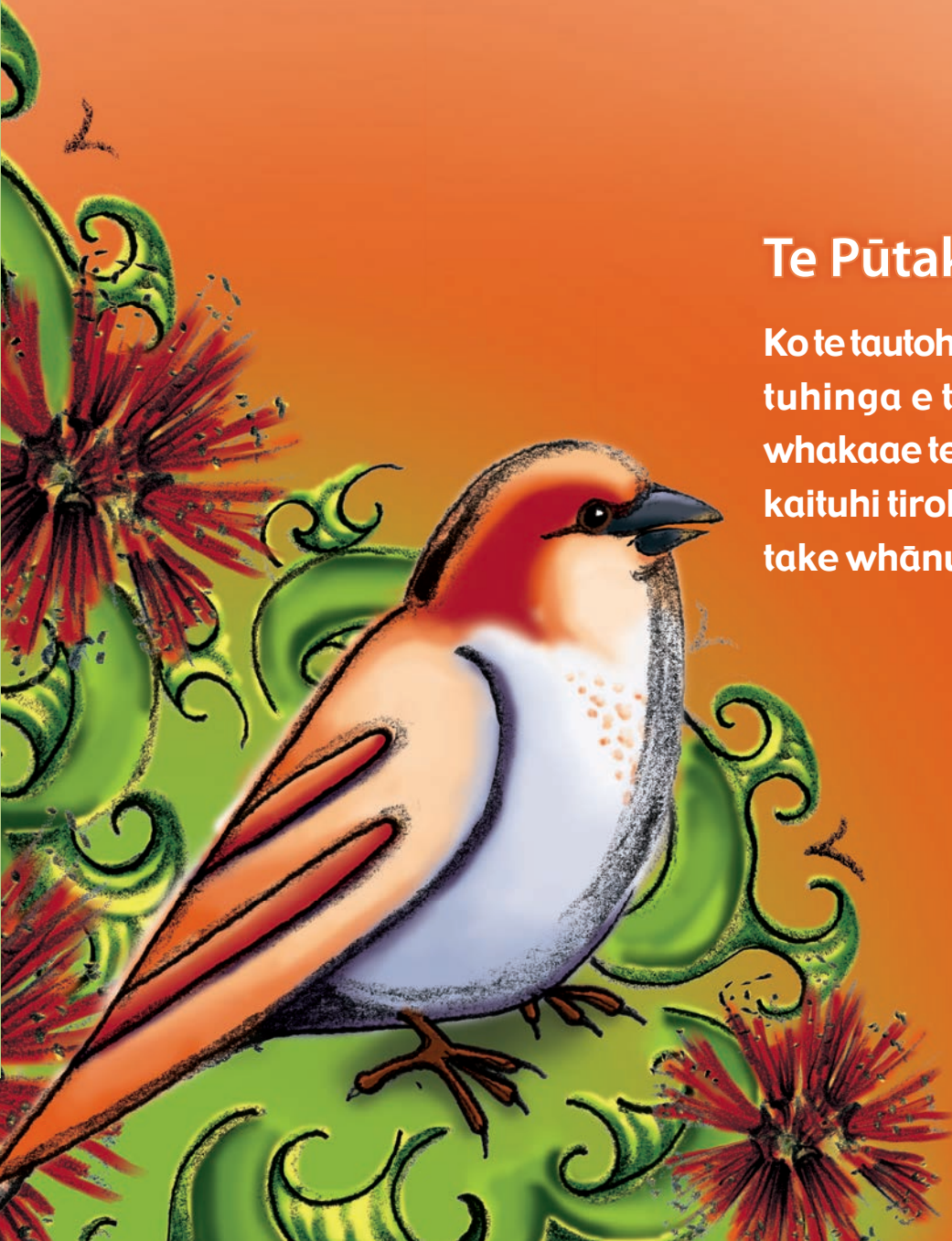
Nāku noa,
nā Reweti Haimona

Tirohia te whārangi 13 mō te whakamāramatanga o ēnei wāhanga.

Te Tautohe Whānui

Te Pūtake

Ko te tautohe whānui he momo tuhinga e tautohe ana kia whakaae te kaipānui ki tā te kaituhi tirohanga mō tētahi take whānui.



He Tautohe Whānui hei Taurira



Ka whakaatu au i te tautohe whānui kua tuhia e Anaru hei tautohe kia tīnīhia ngā haora o ngā kura o te motu.

Ka whakaaturia:

- Ngā āhuetanga reo
- Ngā wāhanga
- Te ara tuhituhi i whāia e Anaru

Tirohia tāna tuhinga:

Me Tini ngā Haora o te Kura

Ka tīmata ngā kura i te iwa karaka i te ata, ka mutu i te toru karaka i te ahiahi. He pai, he kino rānei ēnei haora? Ki ahau nei me tīni ngā haora o te kura.

I te tuatahi, he āhua tōmuri te iwa karaka ki te tīmata i te kura, i te mea ko te ata te wā tino pai mō te mahi-ā-hinengaro me te mahi-ā-tinana. Nō reira, e ai ki ētahi ākongā he pai ake mēnā ka tīmata te kura hei te whitu karaka i te ata.

I te tuarua, me mutu moata ake te kura. He nui ngā painga o tēnā. Ki te mutu te kura i te kotahi karaka, hei te wā o te raumati kāore ngā ākongā e mahi i ngā haora tino wera o te ahiahi. Ka whai wā hoki rātou ki te mahi i te hākinakina me ētahi atu mahi i waho i te kura, ā, hei te wā o te hōtoke, kāore ngā ākongā e tae atu ki te kāinga i te pōuritanga o te ahiahi pō.

Nō reira, me tīni ngā haora o te kura. Me tīmata te kura hei te whitu karaka i te ata, me mutu te kura hei te kotahi karaka i te ahiahi. He pai ake ēnei haora mō te mahi-ā-kura me ngā mahi o waho i te kura.

Ngā Āhuatanga Reo o te Tautohe Whānui



Ka tirohia ētahi o ngā āhuatanga reo o te tautohe whānui:

- Te reo tohu i te mahi a tētahi atu (te reo tautoru)
- Te reo raupapa
- Te reo tūhono i te take me te pānga
- Te reo whakaputa whakaaro
- Te reo whakakapi

Tirohia ngā whārangi e whai ake nei.

Te Whakamāramatanga o ngā Āhuatanga Reo

Te reo tohu i te mahi a tētahi atu (te reo tautoru)

Kei te tohu te kaituhi ānō nei kei te whakaatu ia i ngā pānga o te take ki ētahi atu, nō reira ko te nuinga o te tuhinga i roto i te reo tohu i te mahi a tētahi atu.

Hei tauira:

Ki te mutu te kura i te kotahi karaka, hei te wā o te raumati kāore ngā ākonga e mahi i ngā haora tino wera o te ahiahi.

Ka whai wā hoki rātou ki te mahi i te hākinakina me ētahi mahi i waho i te kura.

Te reo raupapa

Ko tā tēnei reo he tohu kei te whai mai tētahi āhuatanga i tētahi, kia mārama te raupapa o ngā mahi, o ngā ariā rānei. Mā tēnei reo ka whakaraupapa te kaituhi i ngā tohenga o tāna tuhinga.

Hei tauira:

I te tuatahi, he āhua tōmuri te iwa karaka ki te tīmata i te kura.

I te tuarua, me mutu moata ake te kura.

Te reo tūhono i te take me te pānga

Ko tā tēnei reo he tohu i te tūhonotanga o tētahi āhuatanga me te take i puta ai taua āhuatanga.

Hei tauira:

I te tuatahi, he āhua tōmuri te iwa karaka ki te tīmata i te kura, i te mea ko te ata te wā tino pai mō te mahi-ā-hinengaro me te mahi-ā-tinana.

Ki te mutu te kura i te kotahi karaka, hei te wā o te raumati kāore ngā ākonga e mahi i ngā haora tino wera o te ahiahi.

Te reo whakaputa whakaaro

Ko tā tēnei reo he whakamōhio atu ki te kaupānui nō wai te whakaaro.

Hei tauira:

Ki ahau nei me tīni ngā haora o te kura.

Nō reira, e ai ki ētahi ākonga he pai ake mēnā ka tīmata te kura hei te whitu karaka i te ata.

Te reo whakakapi

Ko tā tēnei reo he whakataki i te whakakapinga.

Hei tauira:

Nō reira, kāore i te pai ngā haora o te kura.



Tirohia ngā āhuetanga reo
kua whakamahia e Anaru
i tāna tautohe whānui.

**Te reo tohu i te
mahi a tētahi atu**

ngā ākongā
rātou

Te reo raupapa

I te tuatahi
I te tuarua

**Te reo tūhono i te take
me te pānga**

i te mea
ki te

**Te reo whakaputa
whakaaro**

Ki ahau nei
E ai ki ētahi ākongā

Te reo whakakapi

Nō reira

Me Tini ngā Haora o te Kura

Ka tīmata ngā kura i te iwa karaka i te ata, ka mutu i te toru karaka i te ahiahi. He pai, he kino rānei ēnei haora? Ki ahau nei me tīni ngā haora o te kura.

I te tuatahi, he āhua tōmuri te iwa karaka ki te tīmata i te kura, i te mea ko te ata te wā tino pai mō te mahi-ā-hinengaro me te mahi-ā-tinana. Nō reira, e ai ki ētahi ākongā he pai ake mēnā ka tīmata te kura hei te whitu karaka i te ata.

I te tuarua, me mutu moata ake te kura. He nui ngā painga o tēnā. Ki te mutu te kura i te kotahi karaka, hei te wā o te raumati kāore ngā ākongā e mahi i ngā haora tino wera o te ahiahi. Ka whai wā hoki rātou ki te mahi i te hākinakina me ētahi atu mahi i waho i te kura, ā, hei te wā o te hōtoke, kāore ngā ākongā e tae atu ki te kāinga i te pōuritanga o te ahiahi pō.

Nō reira, me tīni ngā haora o te kura. Me tīmata te kura hei te whitu karaka i te ata, me mutu te kura hei te kotahi karaka i te ahiahi. He pai ake ēnei haora mō te mahi-ā-kura me ngā mahi o waho i te kura.

Ngā Wāhanga o te Tautohe Whānui



E whā ngā wāhanga o te tautohe whānui:

1. Te tapanga
2. Te whakatakotoranga take
3. Te tautohenga
4. Te whakakapinga

Tirohia ngā whārangi e whai ake nei.

Te Whakamāramatanga o ngā Wāhanga

Te tapanga

Hei tāutu i te kaupapa o te tautohe.

Te whakatakotoranga take

Hei tāpae atu ki te kaipānui i:

- Te take o te tautohe
- Tāu tirohanga

Te tautohenga

Hei whakamōhio atu ki te kaipānui i ngā tohenga matua me ngā tohenga tautoko e whakatinana ana i tāu tirohanga.

Te whakakapinga

Hei whakatakoto anō i tāu tirohanga, hei whakarāpopoto, hei whakakapi hoki i te tautohenga.



Ngā Wāhanga



Tirohia ngā wāhanga e whā o te tautohe whaiaro a Anaru.

Te tapanga

Te whakatakotoranga take

Te tautohenga

Te whakakapinga

Me Tīni ngā Haora o te Kura

Ka tīmata ngā kura i te iwa karaka i te ata, ka mutu i te toru karaka i te ahiahi. He pai, he kino rānei ēnei haora? Ki ahau nei me tīni ngā haora o te kura.

I te tuatahi, he āhua tōmuri te iwa karaka ki te tīmata i te kura, i te mea ko te ata te wā tino pai mō te mahi-ā-hinengaro me te mahi-ā-tinana. Nō reira, e ai ki ētahi ākonga he pai ake mēnā ka tīmata te kura hei te whitu karaka i te ata.

I te tuarua, me mutu moata ake te kura. He nui ngā painga o tēnā. Ki te mutu te kura i te kotahi karaka, hei te wā o te raumati kāore ngā ākonga e mahi i ngā haora tino wera o te ahiahi. Ka whai wā hoki rātou ki te mahi i te hākinakina me ētahi atu mahi i waho i te kura, ā, hei te wā o te hōtoke, kāore ngā ākonga e tae atu ki te kāinga i te pōuritanga o te ahiahi pō.

Nō reira, me tīni ngā haora o te kura. Me tīmata te kura hei te whitu karaka i te ata, me mutu te kura hei te kotahi karaka i te ahiahi. He pai ake ēnei haora mō te mahi-ā-kura me ngā mahi o waho i te kura.

He Ara Tuhituhi i te Tautohe Whānui

*Ko te ara tuhituhi e whai ake nei hei
āwhina i te kaituhi ki te whakarite me te
whakatakoto i ngā wāhanga o te tuhinga.*

Erima ngā wāhanga o tēnei ara tuhituhi:

1. Te whakarite i te horopaki o te tuhinga
2. Te rangahau

Te whakarite me te tuhituhi i:

3. Te whakatakotoranga take
4. Te tautohenga
5. Te whakakapinga

*Kia mahara ake – kia tutuki pai ai te mahi tuhituhi,
me matapaki ia wāhanga o te ara e te kaituhi mā
tētahi huarahi matapaki.*

He Ara Tuhituhi

Te horopaki

Whakaarohia:

1. Te pūtake
2. Ngā kaipānui
3. Te momo tuhinga
4. Te tapanga

Te rangahau

- Kohia ōu whakaaro
- Whiriwhiria te puna mātauranga mō te rangahau mai i te rārangi nei:
 - he pukapuka
 - he niupepa
 - he rīpene/kōpae ataata
 - te ipurangi
 - he uiuitanga
- Kohia te mātauranga
- Whiriwhiria tāu tirohanga

Te whakatakotoranga take

- Whakatakotoria te take
- Tāpaetia tāu tirohanga

Te tautohenga

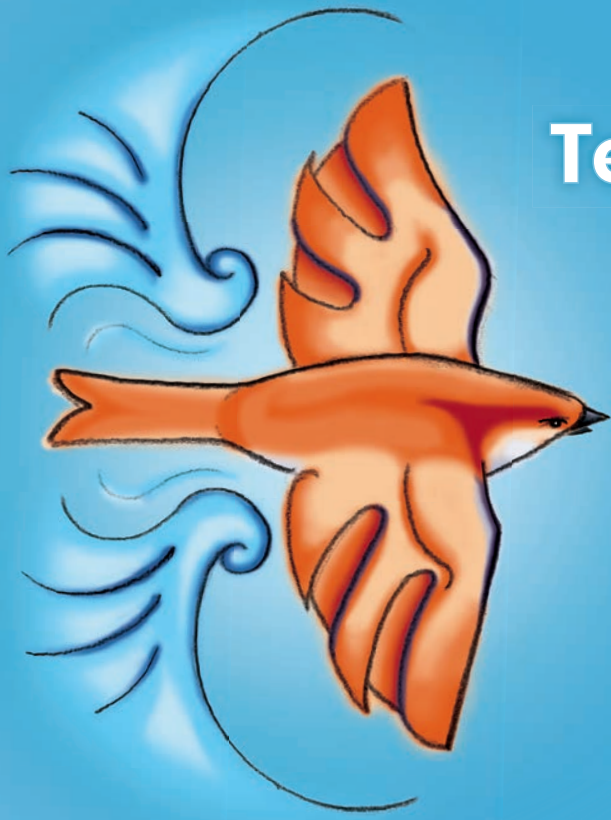
- Whakaritea ngā tohenga matua me ngā tohenga tautoko
- Tuhia te tautohenga

Te whakakapinga

- Whakatakotoria anō tāu tirohanga
- Tuhia he whakaaro hei whakarāpopoto, hei whakakapi hoki i te tautohenga

I whai a Anaru i tēnei ara hei tuhituhi i tāna tautohe whānui mō ngā haora o te kura. Tirohia ngā whārangi e whai ake nei.

Te Horopaki



Ko te mahi tuatahi mā te kaituhi, ko te whakaaro ki te horopaki o tāna tuhinga.

Ka whakautu ia i ēnei pātai:

1. He aha te pūtake o te tuhinga?
2. Mā wai te tuhinga?
3. He aha te momo tuhinga?
4. He aha tētahi tapanga mō te tuhinga?

Tirohia ngā whakautu a Anaru ki ngā pātai mō te horopaki o tāna tuhinga. Ka whiriwhiri a Anaru i tētahi tapanga kia hāngai pū ōna whakaaro ki tāna kaupapa. Ka taea e ia te tīni mēnā he whakaaro atu anō ka puta mai.



- | | |
|----------------------------|---|
| 1. Te pūtake: | He whakawhere i ngā kaipānui kia whakaae rātou ki taku tirohanga mō ngā haora o te kura |
| 2. Ngā kaipānui: | Te whānau o te kura |
| 3. Te momo tuhinga: | He tautohe whānui |
| 4. Te tapanga: | Ngā Haora o te Kura |

Te Rangahau

Kua āta whakaarohia te horopaki o te tuhinga. I nāianeī me whakarite e Anaru te rangahau hei rapu i ngā whakaaro me te mātauranga mō ngā haora o te kura.

Tuatahi, ka kohikohi ia i ōna whakaaro.

Tuarua, ka whiriwhiri i te puna mātauranga mō te rangahau.

Tuatoru, ka kohikohi i te mātauranga.

Tuawhā, ka whiriwhiri i tāna tirohanga.

Kohia ōu whakaaro

I te tuatahi, ka whakatakoto a Anaru i ōna ake whakaaro mō ngā haora o te kura.

*Pai ake ngā ata
i ngā ahiahi*

*He poto te wā
mō te hākinakina
i te hōtoke*

*Me tini ngā haora
o te kura?*



*He pai te whakapoto
i te rā*

Whiriwhiria te puna mātauranga mō te rangahau



Ka whakawhiti kōrero a Anaru me tōna kaiako mō te rangahau. Ka whakatau rāua me uiui e Anaru tētahi rōpū ākonga me te kohikohi i ō rātou whakaaro mō ngā haora o te kura.

Kohia te mātauranga

Ka uiui a Anaru i te rōpū ākonga mō tēnei pātai: Me tīni ngā haora o te kura, kāore rānei? I a rātou e kōrero ana, ka tuhi tuhinga tīpoka ia. Kātahi ka tirohia ngā tuhinga tīpoka, ka whakawehea ō rātou whakaaro ki ēnei kohinga kōrero e rua:

He pai ngā haora o te kura

- Ki te timata moata ake te kura, ngenge ētahi ākonga
- Ki te mutu moata ake te kura he uaua mō ētahi mātua ki te tiaki tamariki
- Kua waia ngā ākonga me ngā mātua ki ngā haora



Me timata moata ake te kura

- He pai te ata mō te mahi-ā-hinengaro me te mahi-ā-tinana
- Hei te raumati kāore ngā ākonga e mahi i ngā haora tino wera o te ahiahi
- Ka whai wā ngā ākonga ki te mahi hākinakina me ērā atu mahi i muri i te kura
- Hei te hōtoke kāore ngā ākonga e hoki atu ki te kāinga i te wā pōuri

Whiriwhiria tāu tirohanga

Ka arotake a Anaru i ngā kohinga kōrero e rua, kātahi ka whiriwhiri ia i tēnei tirohanga mō te tuhinga: Ko tāna whakapae, me tīni ngā haora o te kura. Ka tīnīhia te tapanga kia hāngai ki tāna tirohanga:

Me Tīni ngā Haora o te Kura



Te Whakatakotoranga Take



Kua oti te rangahau, kua whiriwhiria tāna tirohanga. Kua rite a Anaru ki te tuhi i te whakatakotoranga take. Kei tēnei wāhanga ka whakatakoto ia i te take, ka tāpae hoki i tāna tirohanga.

Ka tīmata ngā kura i te iwa karaka i te ata, ka mutu i te toru karaka i te ahiahi. He pai, he kino rānei ēnei haora? Ki ahau nei me tīni ngā haora o te kura.

Te tirohanga

Te whakatakoto i te take

Te whakatakotoranga take

Te tautohenga

Te whakakapinga

Te Tautohenga

*Ka huri a Anaru i nāianeī ki te whakarite i te tautohenga.
Ka whakarite ia i ngā tohenga matua me ngā tohenga
tautoko hei whakatinana i tāna tirohanga.*

Whakaritea ngā tohenga matua me ngā tohenga tautoko

Ka titiro a Anaru ki ana kohinga kōrero. Ki tāna e rua ngā tohenga matua. Ka whakatakotoria ngā tohenga matua, kātahi ka whakaarohia, ka whakatakotoria ētahi tohenga e tautoko ana i ngā tohenga matua.

Te tirohanga —→ *Me tini ngā haora o te kura.*



Te tohenga matua —→ *He tōmuri te iwa karaka ki te timata i te kura.*

Ngā tohenga tautoko —→

- Ko te ata te wā pai mō te mahi-ā-hinengaro.*
- Ko te ata te wā pai mō te mahi-ā-tinana.*
- E ai ki ētahi ākonga me timata te kura i te whitu karaka.*

Te tohenga matua —→ *Me mutu moata ake te kura.*

Ngā tohenga tautoko —→

- Hei te raumati, kāore ngā ākonga e mahi i ngā haora tino wera.*
- Ka whai wā ngā ākonga ki te mahi hākinakina i muri i te kura.*
- Ka whai wā ngā ākonga ki te mahi i ētahi atu mahi i waho i te kura.*
- Hei te hōtoke, kāore ngā ākonga e tae atu ki te kāinga i te pōuritanga o te ahiahi pō.*



Tuhia te tautohenga

Whai muri mai ka huri a Anaru ki te tuhi i te tautohenga.
Ko te rerenga tuatahi o ia kōwae he tohenga matua.
E whai ana ngā tohenga tautoko. Ka whakaraupapahia
ngā tohenga matua ki te reo raupapa.



I te tuatahi, he āhua tōmuri te iwa karaka ki te tīmata i te kura, i te mea ko te ata te wā tino pai mō te mahi-ā-hinengaro me te mahi-ā-tinana. Nō reira, e ai ki ētahi ākonga he pai ake mēnā ka tīmata te kura hei te whitu karaka i te ata.

I te tuarua, me mutu moata ake te kura. He nui ngā painga o tēnā. Ki te mutu te kura i te kotahi karaka, hei te wā o te raumati kāore ngā ākonga e mahi i ngā haora tino wera o te ahiahi. Ka whai wā hoki rātou ki te mahi i te hākinakina me ētahi atu mahi i waho i te kura, ā, hei te wā o te hōtoke, kāore ngā ākonga e tae atu ki te kāinga i te pōuritanga o te ahiahi pō.

Te whakatakotoranga take

Te tautohenga

Te whakakapinga

Te Whakakapinga



Hei whakakapi i tāna tuhinga ka whakatakoto anō a Anaru i tāna tirohanga, ka whakarāpopoto hoki i tāna tautohenga.



Te whakatakoto anō
i te tirohanga

Te whakarāpopotonga

→ **Nō reira, me tīni ngā haora o te kura.** Me tīmata te kura hei te whitu karaka i te ata, me mutu te kura hei te kotahi karaka i te ahiahi. He pai ake ēnei haora mō te mahi-ā-kura me ngā mahi o waho i te kura.

Te whakatakotoranga take

Te tautohenga

Te whakakapinga

Te Tautohe Whānui a Anaru



Tirohia ngā wāhanga katoa o te tuhinga a Anaru.

Me Tini ngā Haora o te Kura

Ka tīmata ngā kura i te iwa karaka i te ata, ka mutu i te toru karaka i te ahiahi. He pai, he kino rānei ēnei haora? Ki aha nei me tini ngā haora o te kura.

I te tuatahi, he āhua tōmuri te iwa karaka ki te tīmata i te kura, i te mea ko te ata te wā tino pai mō te mahi-ā-hinengaro me te mahi-ā-tinana. Nō reira, e ai ki ētahi ākonga he pai ake mēnā ka tīmata te kura hei te whitu karaka i te ata.

I te tuarua, me mutu moata ake te kura. He nui ngā painga o tēnā. Ki te mutu te kura i te kotahi karaka, hei te wā o te raumati kāore ngā ākonga e mahi i ngā haora tino wera o te ahiahi. Ka whai wā hoki rātou ki te mahi i te hākinakina me ētahi atu mahi i waho i te kura, ā, hei te wā o te hōtoke, kāore ngā ākonga e tae atu ki te kāinga i te pōuritanga o te ahiahi pō.

Nō reira, me tini ngā haora o te kura. Me tīmata te kura hei te whitu karaka i te ata, me mutu te kura hei te kotahi karaka i te ahiahi. He pai ake ēnei haora mō te mahi-ā-kura me ngā mahi o waho i te kura.

He Taurira Anō

Ko ngā taurira anō hei whakaatu i te whanaketanga o ngā āhuatanga reo, ngā tikanga tuhituhi me ngā kupu mō te tautohe whānui.

Ka tirohia te tuhinga, ngā āhuatanga reo me ngā wāhanga o ēnei taurira tuhinga.



He Tautohe Whānui hei Taurira



*Ka whakawhitiwhiti whakaaro,
ka rangahau a Manawa i te take:
He pai te tiaki mōkai mō te tamaiti,
kāore rānei? Whai muri ka tuhi
tautohe whānui ia.*

He Maha ngā Painga o te Tiaki Mōkai mō te Tamaiti

He nui ngā taputapu nō te ao rorohiko mā ngā tamariki i ēnei rā, engari he pai tonu mēnā ka whiwhi mōkai te tamaiti, nā te mea he maha ngā painga o te tiaki mōkai mō ngā tamariki o ēnei rā.

I te tuatahi, ka ako te tamaiti ki te tiaki i tētahi mea koiora. He maha ngā mīhini i tēnei ao hurihuri. Ki te kore te tamaiti e tiaki mōkai, ka pēhea ia e ako ai ki te tiaki i ngā mea koiora?

I te tuarua, ka ako ngā tamariki ki te aro ake ki tētahi atu i tua atu i a rātou ake. E ai ki ētahi tāngata, ki te tiaki mōkai te tamaiti, he pai hoki ia ki te tiaki tangata (tirohia te pae tukutuku 'Ngā Painga o te Whiwhi Mōkai'). He akoranga pai te whakaaro mō te hiahia me te wawata o tētahi atu.

I te tuatoru, ka ako te tamaiti ki te mahi i tētahi whāinga mō te wā roa. He maha ngā tamariki ka taea e rātou te mahi mō te rā, mō te wiki rānei, engari me tiaki mōkai te tamaiti ia rā, ia rā.

Heoi anō, he akoranga nui mō te tamaiti te tiaki mōkai: ka ako te tamaiti ki te tiaki i tētahi mea koiora; ka ako ia ki te aro atu ki tētahi atu; ka ako ia ki te mahi i tētahi whāinga mō te wā roa. He maha ngā painga o te tiaki mōkai mō te tamaiti nō tēnei ao.

Ngā tohutoro

AVA PetPEP. *Benefits of Owning a Pet*. I tangohia i te 22/08/07, mai i <http://www.heavenlyrain.com/avapetpep/website/benefits/index.html>

Ngā Āhuatanga Reo



Tirohia ngā āhuatanga reo
kua whakamahia e Manawa
i tāna tautohe whānui.

Te reo tohu i te mahi a tētahi atu

ngā tamariki
te tamaiti
rātou
ia

Te reo raupapa

I te tuatahi
I te tuarua
I te tuatoru

Te reo tūhono i te take me te pānga

nā te mea
Ki te kore

Te reo whakaputa whakaaro

E ai ki ētahi tāngata

Te reo whakakapi

Heoi anō

He Maha ngā Painga o te Tiaki Mōkai mō te Tamaiti

He nui ngā taputapu nō te ao rorohiko mā ngā tamariki i ēnei rā, engari he pai tonu mēnā ka whiwhi mōkai te tamaiti, nā te mea he maha ngā painga o te tiaki mōkai mō ngā tamariki o ēnei rā.

I te tuatahi, ka ako te tamaiti ki te tiaki i tētahi mea koiora. He maha ngā mīhini i tēnei ao hurihuri. Ki te kore te tamaiti e tiaki mōkai, ka pēhea ia e ako ai ki te tiaki i ngā mea koiora?

I te tuarua, ka ako ngā tamariki ki te aro ake ki tētahi atu i tua atu i a rātou ake. E ai ki ētahi tāngata, ki te tiaki mōkai te tamaiti, he pai hoki ia ki te tiaki tangata (tirohia te pae tukutuku 'Ngā Painga o te Whiwhi Mōkai'). He akoranga pai te whakaaro mō te hiahia me te wawata o tētahi atu.

I te tuatoru, ka ako te tamaiti ki te mahi i tētahi whāinga mō te wā roa. He maha ngā tamariki ka taea e rātou te mahi mō te rā, mō te wiki rānei, engari me tiaki mōkai te tamaiti ia rā, ia rā.

Heoi anō, he akoranga nui mō te tamaiti te tiaki mōkai: ka ako te tamaiti ki te tiaki i tētahi mea koiora; ka ako ia ki te aro atu ki tētahi atu; ka ako ia ki te mahi i tētahi whāinga mō te wā roa. He maha ngā painga o te tiaki mōkai mō te tamaiti nō tēnei ao.

Ngā tohutoro

AVA PetPEP. *Benefits of Owning a Pet*. I tangohia i te 22/08/07, mai i <http://www.heavenlyrain.com/avapetpep/website/benefits/index.html>

Tirohia te whārangi 34 mō te whakamāramatanga o ēnei āhuatanga reo.

Ngā Wāhanga



Tirohia ngā wāhanga e whā o te tautohe whānui a Manawa. Kua tāpiritia ngā tohutoro hei whakamōhio atu ki te kaipānui nō hea te mātauranga.

Te tapanga

Te whakatakotoranga take

Te tautohenga

Te whakakapinga

He Maha ngā Painga o te Tiaki Mōkai mō te Tamaiti

He nui ngā taputapu nō te ao rorohiko mā ngā tamariki i ēnei rā, engari he pai tonu mēnā ka whiwhi mōkai te tamaiti, nā te mea he maha ngā painga o te tiaki mōkai mō ngā tamariki o ēnei rā.

I te tuatahi, ka ako te tamaiti ki te tiaki i tētahi mea koiora. He maha ngā mīhini i tēnei ao hurihuri. Ki te kore te tamaiti e tiaki mōkai, ka pēhea ia e ako ai ki te tiaki i ngā mea koiora?

I te tuarua, ka ako ngā tamariki ki te aro ake ki tētahi atu i tua atu i a rātou ake. E ai ki ētahi tāngata, ki te tiaki mōkai te tamaiti, he pai hoki ia ki te tiaki tangata (tirohia te pae tukutuku 'Ngā Painga o te Whiwhi Mōkai'). He akoranga pai te whakaaro mō te hiahia me te wawata o tētahi atu.

I te tuatoru, ka ako te tamaiti ki te mahi i tētahi whāinga mō te wā roa. He maha ngā tamariki ka taea e rātou te mahi mō te rā, mō te wiki rānei, engari me tiaki mōkai te tamaiti ia rā, ia rā.

Heoi anō, he akoranga nui mō te tamaiti te tiaki mōkai: ka ako te tamaiti ki te tiaki i tētahi mea koiora; ka ako ia ki te aro atu ki tētahi atu; ka ako ia ki te mahi i tētahi whāinga mō te wā roa. He maha ngā painga o te tiaki mōkai mō te tamaiti nō tēnei ao.

Ngā tohutoro

AVA PetPEP. *Benefits of Owning a Pet*. I tangohia i te 22/08/07, mai i <http://www.heavenlyrain.com/avapetpep/website/benefits/index.html>

Tirohia te whārangi 37 mō te whakamāramatanga o ēnei wāhanga.

He Tautohe Whānui hei Taurira



Ka whakawhitiwhiti whakaaro, ka rangahau a Pera i te take: Me mau e ngā ākonga o te motu te kākahu-ā-kura, kāore rānei? Whai muri ka tuhi tautohe whānui ia.

Te Kākahu-ā-Kura

Tokohia ngā ākonga e haere ana ki ngā kura o te motu ia wiki, ia wiki? Tokohia hoki ngā ākonga e tū whakahihī ana mō ō rātou kākahu, e tū whakamā ana rānei mō ō rātou kākahu? Ki tōku nei whakapae me mau e ngā ākonga-ā-kura katoa o te motu te kākahu-ā-kura, ahakoa ko wai rātou, ahakoa nō hea rātou.

Ko te take tuatahi, he mea nui te tohu nō te kaitui kākahu, pērā i a Ripcurl, Billabong, me Nike ki ngā ākonga. E hiahiatia ana ngā kākahu kua tohungia pērātia e te nuinga o ngā ākonga. Ki te kore ngā ākonga e mau kākahu-ā-kura, ka tū te whakataetae kākahu i waenganui i a rātou. I ētahi wā he nui te raruraru, ā, ka tāhaengia ngā hū me ngā kākahu.

Ko te take tuarua, mēnā kāore he kākahu-ā-kura, ka whakawehea ngā ākonga i runga i ngā momo kākahu. Nō reira, ko ngā kākahu-ā-kura he mea hāpai i te whakakotahitanga o te kura.

Āpiti atu ki ērā take, he taumaha rawa te utu o ngā kākahu kua tohungia e ngā kamupene nui. Mā te kaha o te utu, ka pakaru te pūkoro o ngā mātua. E ai ki tētahi kaitohutohu mō te āhua tāngata (tirohia te pae tukutuku 'Te Tautohetohe mō te Kākahu-ā-kura'), ahakoa he nui te utu mō ngā kākahu-ā-kura, he māmā ake tērā i te hoko kākahu maha i runga i ngā hiahia o ngā ākonga.

Heoti anō, me mau e ngā ākonga-ā-kura o te motu te kākahu-ā-kura, ahakoa ko wai rātou, ahakoa nō hea rātou. Hei aha? Hei hāpai i te rangimārie i waenganui i ngā ākonga, hei whakakotahi i te kura, hei āwhina hoki i ngā mātua.

Ngā tohutoro

Benefits of School Uniforms. I tangohia i te 22/08/07, mai i

http://kids.lovetoknow.com/wiki/Benefits_of_School_Uniforms

The School Uniform Debate: An Image Consultant Weighs in. I tangohia i te 22/08/07, mai i

http://kids.lovetoknow.com/wiki/The_School_Uniform_Debate:_An_Image_Consultant_Weighs_In

Ngā Āhuratanga Reo



Tirohia ngā āhuratanga reo
kua whakamahia e Pera i tāna
tautohe whānui.

Te reo tohu i te mahi a tētahi atu

ngā ākonga
rātou
ngā mātua

Te reo raupapa

Ko te take tuatahi
Ko te take tuarua
Āpiti atu ki ērā take

Te reo tūhono i te take me te pānga

Ki te
Mēnā
Mā te

Te reo whakaputa whakaaro

Ki tōku nei whakapae
E ai ki tētahi kaitohutohu

Te reo whakakapi

Heoti anō

Te Kākahu-ā-Kura

Tokohia ngā ākonga e haere ana ki ngā kura o te motu ia wiki, ia wiki? Tokohia hoki ngā ākonga e tū whakahihī ana mō ō rātou kākahu, e tū whakamā ana rānei mō ō rātou kākahu? Ki tōku nei whakapae me mau e ngā ākonga-ā-kura katoa o te motu te kākahu-ā-kura, ahakoa ko wai rātou, ahakoa nō hea rātou.

Ko te take tuatahi, he mea nui te tohu nō te kaitui kākahu, pērā i a Ripcurl, Billabong, me Nike ki ngā ākonga. E hiahia ana ngā kākahu kua tohungia pērātia e te nuinga o ngā ākonga. Ki te kore ngā ākonga e mau kākahu-ā-kura, ka tū te whakataetae kākahu i waenganui i a rātou. I ētahi wā he nui te raruraru, ā, ka tāhaengia ngā hū me ngā kākahu.

Ko te take tuarua, mēnā kāore he kākahu-ā-kura, ka whakawehea ngā ākonga i runga i ngā momo kākahu. Nō reira, ko ngā kākahu-ā-kura he mea hāpai i te whakakotahitanga o te kura.

Āpiti atu ki ērā take, he taumaha rawa te utu o ngā kākahu kua tohungia e ngā kamupene nui. Mā te kaha o te utu, ka pakaru te pūkoro o ngā mātua. E ai ki tētahi kaitohutohu mō te āhua tāngata (tirohia te pae tukutuku 'Te Tautohetohe mō te Kākahu-ā-kura'), ahakoa he nui te utu mō ngā kākahu-ā-kura, he māmā ake tērā i te hoko kākahu maha i runga i ngā hiahia o ngā ākonga.

Heoti anō, me mau e ngā ākonga-ā-kura o te motu te kākahu-ā-kura, ahakoa ko wai rātou, ahakoa nō hea rātou. Hei aha? Hei hāpai i te rangimārie i waenganui i ngā ākonga, hei whakakotahi i te kura, hei āwhina hoki i ngā mātua.

Ngā tohutoro

Benefits of School Uniforms. I tangohia i te 22/08/07, mai i

http://kids.lovetoknow.com/wiki/Benefits_of_School_Uniforms

The School Uniform Debate: An Image Consultant Weighs in. I tangohia i te 22/08/07, mai i

http://kids.lovetoknow.com/wiki/The_School_Uniform_Debate:_An_Image_Consultant_Weighs_In

Tirohia te whārangi 34 mō te whakamāramatanga o ēnei āhuratanga reo.



Ngā Wāhanga

Tirohia ngā wāhanga e whā o te tautohe whānui a Pera. Kua tāpiritia ngā tohutoro hei whakamōhio atu ki te kaipānui nō hea te mātauranga.

Te tapanga

Te Kākahu-ā-Kura

Te whakatakotoranga take

Tokohia ngā ākonga e haere ana ki ngā kura o te motu ia wiki, ia wiki? Tokohia hoki ngā ākonga e tū whakahīhi ana mō ō rātou kākahu, e tū whakamā ana rānei mō ō rātou kākahu? Ki tōku nei whakapae me mau e ngā ākonga-ā-kura katoa o te motu te kākahu-ā-kura, ahakoa ko wai rātou, ahakoa nō hea rātou.

Te tautohenga

Ko te take tuatahi, he mea nui te tohu nō te kaitui kākahu, pērā i a Ripcurl, Billabong, me Nike ki ngā ākonga. E hiahiatia ana ngā kākahu kua tohungia pērātia e te nuinga o ngā ākonga. Ki te kore ngā ākonga e mau kākahu-ā-kura, ka tū te whakataetae kākahu i waenganui i a rātou. I ētahi wā he nui te raruraru, ā, ka tāhaengia ngā hū me ngā kākahu.

Ko te take tuarua, mēnā kāore he kākahu-ā-kura, ka whakawehea ngā ākonga i runga i ngā momo kākahu. Nō reira, ko ngā kākahu-ā-kura he mea hāpai i te whakakotahitanga o te kura.

Āpiti atu ki ērā take, he taumaha rawa te utu o ngā kākahu kua tohungia e ngā kamupene nui. Mā te kaha o te utu, ka pakaru te pūkoro o ngā mātua. E ai ki tētahi kaitohutohu mō te āhua tāngata (tirohia te pae tukutuku 'Te Tautohetohe mō te Kākahu-ā-kura'), ahakoa he nui te utu mō ngā kākahu-ā-kura, he māmā ake tērā i te hoko kākahu maha i runga i ngā hiahia o ngā ākonga.

Te whakakapinga

Heoti anō, me mau e ngā ākonga-ā-kura o te motu te kākahu-ā-kura, ahakoa ko wai rātou, ahakoa nō hea rātou. Hei aha? Hei hāpai i te rangimārie i waenganui i ngā ākonga, hei whakakotahi i te kura, hei āwhina hoki i ngā mātua.

Ngā tohutoro

Benefits of School Uniforms. I tangohia i te 22/08/07, mai i

http://kids.lovetoknow.com/wiki/Benefits_of_School_Uniforms

The School Uniform Debate: An Image Consultant Weighs in. I tangohia i te 22/08/07, mai i

http://kids.lovetoknow.com/wiki/The_School_Uniform_Debate:_An_Image_Consultant_Weighs_In

Tirohia te whārangi 37 mō te whakamāramatanga o ēnei wāhanga.

He Mahere Ārahi i te Tuhituhi



Te Whakarite Tohenga mō te Tautohe 1

Te hiahia/ tirohanga →

Te tohenga matua →

Te tohenga tautoko →

.....

Te tohenga matua →

Te tohenga tautoko →

.....

Te tohenga matua →

Te tohenga tautoko →

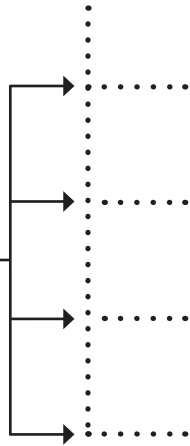
.....

Te Whakarite Tohenga mō te Tautohe 2

Te hiahia/
tirohanga →

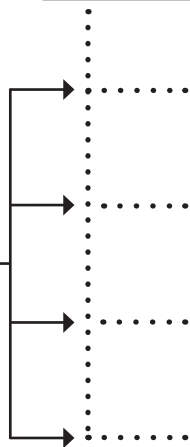
Te tohenga matua →

Ngā tohenga tautoko



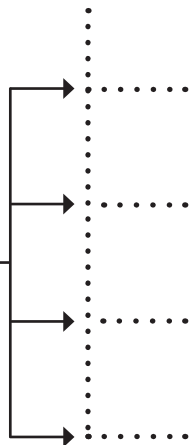
Te tohenga matua →

Ngā tohenga tautoko



Te tohenga matua →

Ngā tohenga tautoko



Ngā Tauira Tuhinga



He reta mō te hiahia ki te whiwhi kurī

Tēnā e Māmā,

E mōhio ana ahau kāore koe e tino whakaae i tēnei wā kia whiwhi kurī au. Koirā au ka tuhi reta ki a koe, kia whakaae mai koe ki tōku tino hiahia ki te whiwhi kurī hei mōkai mōku.

Tuatahi, mā te whiwhi kurī ka ako au ki te āta tiaki i a ia. He akoranga nui tērā mōku.

Tuarua, ka hīkoi tahi māua ia rā, ia rā kia pakari haere tōna tinana me tōku hoki.

Tuatoru, ko te kurī te tino hoa o ngā hoa mōku. Ka korikori tahi māua, ka tiaki māua i a māua anō i te wā o te pōuri, ka hāereere tahi hoki māua ki wī, ki wā.

Nō reira, ka mutu, ki ahau nei he maha ngā painga o te whiwhi kurī. He painga mōku, he painga mōna, ā, ki te whakaae mai koe, kāore e kore he painga hoki mō te whānau. Ka taea e au Māmā, nē i?

Aroha nui,
Nā Hana

He reta mō ngā kākahu-ā-kura

Tēnā koutou e te poari whakahaere o te kura,

Ko ngā kākahu-ā-kura te kaupapa o tā mātou reta. Kua kōrero mātou mō te āhua o ō mātou nei kākahu-ā-kura. Ki a mātou nei, me tīni ngā kākahu-ā-kura.

I te tuatahi, kāore i te pai ngā kākahu hei te wā o te raumati. He āhua mātotoru te papanga, ā, ka heke te werawera. He uaua mā mātou ki te tiaki i ō mātou tinana.

I te tuarua, kāore he pai ngā tae o ngā kākahu. Kua tino hōhā mātou ki te kiwikiwi me te parauri. E hiahia ana mātou ki tētahi tae ātaahua hei hāpai ake i ō mātou wairua.

Heoi anō, e te poari whakahaere, ko tō mātou hiahia kia tīnīhia te āhua o ngā kākahu-ā-kura, i te mea kāore i te pai ki a mātou te papanga me ngā tae. Ko te tūmanako ka whai wā tātou ki te kōrero kanohi ki te kanohi mō tēnei kaupapa.

Noho ora mai,

Nā mātou ko Anihera Baker, ko Erena Hurae, ko Alicia Hohepa

He reta mō te pāka kei te wāhi noho

Tēnā koutou e te Kaunihera,

E tuhi ana ahau i tēnei reta ki te whakamōhio atu i a koutou mō tōku hiahia kia tū tonu te pāka kei te tiriti o Rākaunui. I kōrero mai tō mātou kaiako e hiahia ana koutou ki te turaki i te pāka kia hangaia he whare hou. Ko tāku ki a koutou kia tū tonu te pāka.

Ko te tuatahi, kāore au e whakaae ki tō koutou hiahia, nā te mea mō mātou, mō ngā tamariki o te tiriti o Rākaunui, tērā pāka. Ia rā, ia rā ka haere atu mātou ko ōku hoa ki te pāka tākaro ai. He wāhi pai, he wāhi haumaruru hoki. Ki te turaki koutou i te pāka, ki hea mātou tākaro ai?

Ko te tuarua, kāore he nui ngā wāhi tākaro kei tō mātou nei wāhi noho, engari he nui ngā wāhi mō te hanga whare. E mea ana ahau nā te rahi o te whenua e wātea ana ki te whakatū whare, korekau he take kia turaki i te pāka mō taua whenua anō rā.

Ko te tuatoru, he tangata noho hapori mātou o te tiriti nei, he kaha nō mātou ki te mahi tahi, ki te whakangahau tahi, ki te korikori tahi hoki kia pai ai tō mātou noho ki a mātou anō. He wāhi pai te pāka mō te tūtaki atu mātou i a mātou, ngā tāngata o te tiriti o Rākaunui. Ki ahau nei, ki te kore te pāka e tū tonu ka memeha haere ngā āhuatanga o te noho tahi me te mahi tahi o tēnei hapori.

Heoti anō rā, ko tāku inoi ki a koutou kia tū tonu te pāka i te tiriti o Rākaunui hei wāhi tākaro haumaruru mō mātou, mō ngā tamariki nō te tiriti o Rākaunui.

Nāku noa,
nā Reweti Haimona

Me Tīni ngā Haora o te Kura

Ka tīmata ngā kura i te iwa karaka i te ata, ka mutu i te toru karaka i te ahiahi. He pai, he kino rānei ēnei haora? Ki ahau nei me tīni ngā haora o te kura.

I te tuatahi, he āhua tōmuri te iwa karaka ki te tīmata i te kura, i te mea ko te ata te wā tino pai mō te mahi-ā-hinengaro me te mahi-ā-tinana. Nō reira, e ai ki ētahi ākonga he pai ake mēnā ka tīmata te kura hei te whitu karaka i te ata.

I te tuarua, me mutu moata ake te kura. He nui ngā painga o tēnā. Ki te mutu te kura i te kotahi karaka, hei te wā o te raumati kāore ngā ākonga e mahi i ngā haora tino wera o te ahiahi. Ka whai wā hoki rātou ki te mahi i te hākinakina me ētahi atu mahi i waho i te kura, ā, hei te wā o te hōtoke, kāore ngā ākonga e tae atu ki te kāinga i te pōuritanga o te ahiahi pō.

Nō reira, me tīni ngā haora o te kura. Me tīmata te kura hei te whitu karaka i te ata, me mutu te kura hei te kotahi karaka i te ahiahi. He pai ake ēnei haora mō te mahi-ā-kura me ngā mahi o waho i te kura.

He Maha ngā Painga o te Tiaki Mōkai mō te Tamaiti

He nui ngā taputapu nō te ao rorohiko mā ngā tamariki i ēnei rā, engari he pai tonu mēnā ka whiwhi mōkai te tamaiti, nā te mea he maha ngā painga o te tiaki mōkai mō ngā tamariki o ēnei rā.

I te tuatahi, ka ako te tamaiti ki te tiaki i tētahi mea koiora. He maha ngā mīhini i tēnei ao hurihuri. Ki te kore te tamaiti e tiaki mōkai, ka pēhea ia e ako ai ki te tiaki i ngā mea koiora?

I te tuarua, ka ako ngā tamariki ki te aro ake ki tētahi atu i tua atu i a rātou ake. E ai ki ētahi tāngata, ki te tiaki mōkai te tamaiti, he pai hoki ia ki te tiaki tangata (tirohia te pae tukutuku ‘Ngā Painga o te Whiwhi Mōkai’). He akoranga pai te whakaaro mō te hiahia me te wawata o tētahi atu.

I te tuatoru, ka ako te tamaiti ki te mahi i tētahi whāinga mō te wā roa. He maha ngā tamariki ka taea e rātou te mahi mō te rā, mō te wiki rānei, engari me tiaki mōkai te tamaiti ia rā, ia rā.

Heoi anō, he akoranga nui mō te tamaiti te tiaki mōkai: ka ako te tamaiti ki te tiaki i tētahi mea koiora; ka ako ia ki te aro atu ki tētahi atu; ka ako ia ki te mahi i tētahi whāinga mō te wā roa. He maha ngā painga o te tiaki mōkai mō te tamaiti nō tēnei ao.

Ngā tohutoro

AVA PetPEP. *Benefits of Owning a Pet*. I tangohia i te 22/08/07, mai i

<http://www.heavenlyrain.com/avapetpep/website/benefits/index.html>

Te Kākahu-ā-Kura

Tokohia ngā ākonga e haere ana ki ngā kura o te motu ia wiki, ia wiki? Tokohia hoki ngā ākonga e tū whakahihī ana mō ō rātou kākahu, e tū whakamā ana rānei mō ō rātou kākahu? Ki tōku nei whakapae me mau e ngā ākonga-ā-kura katoa o te motu te kākahu-ā-kura, ahakoa ko wai rātou, ahakoa nō hea rātou.

Ko te take tuatahi, he mea nui te tohu nō te kaitui kākahu, pērā i a Ripcurl, Billabong, me Nike ki ngā ākonga. E hiahiatia ana ngā kākahu kua tohungia pērātia e te nuinga o ngā ākonga. Ki te kore ngā ākonga e mau kākahu-ā-kura, ka tū te whakataetae kākahu i waenganui i a rātou. I ētahi wā he nui te raruraru, ā, ka tāhaengia ngā hū me ngā kākahu.

Ko te take tuarua, mēnā kāore he kākahu-ā-kura, ka whakawehea ngā ākonga i runga i ngā momo kākahu. Nō reira, ko ngā kākahu-ā-kura he mea hāpai i te whakakotahitanga o te kura.

Āpiti atu ki ērā take, he taumaha rawa te utu o ngā kākahu kua tohungia e ngā kamupene nui. Mā te kaha o te utu, ka pakaru te pūkoro o ngā mātua. E ai ki tētahi kaitohutohu mō te āhua tāngata (tirohia te pae tukutuku 'Te Tautohetohe mō te Kākahu-ā-kura'), ahakoa he nui te utu mō ngā kākahu-ā-kura, he māmā ake tērā i te hoko kākahu maha i runga i ngā hiahia o ngā ākonga.

Heoti anō, me mau e ngā ākonga-ā-kura o te motu te kākahu-ā-kura, ahakoa ko wai rātou, ahakoa nō hea rātou. Hei aha? Hei hāpai i te rangimārie i waenganui i ngā ākonga, hei whakakotahi i te kura, hei āwhina hoki i ngā mātua.

Ngā tohutoro

Benefits of School Uniforms. I tangohia i te 22/08/07, mai i

http://kids.lovetoknow.com/wiki/Benefits_of_School_Uniforms

The School Uniform Debate: An Image Consultant Weighs in. I tangohia i te 22/08/07, mai i

http://kids.lovetoknow.com/wiki/The_School_Uniform_Debate:_An_Image_Consultant_Weighs_In

Te Kuputaka

haumarū	Ko te mea haumarū he mea kua āta tiakina hei pupuri i te mauri ora.*
koiora	Ko te mea koiora he mea e ora ana.*
mātotoru	Ko te mea mātotoru he mea he āhua roa mai i te taha o mua ki te taha o muri, te taha o runga rānei ki te taha o raro.*
memeha	Ki te memeha tētahi mea, ka ngaro haere.*
papanga	He mea i mahia mai i te aho miro hei whatu kākahu.*
tāpae	Ki te tāpae koe i tētahi hiahia, i tētahi tirohanga rānei, ka whakatakotoria ki mua i te aroaro o ētahi atu hei whakaarotanga mā rātou.*
tuhinga tīpoka	Ko ngā tuhinga poto hei whakawhāiti i ngā whakaaro, i ngā mātauranga rānei.
turaki(na)	Ki te turaki koe i tētahi mea, ka panaia atu e koe kia hinga atu ki te papa.*
whakawhere	Ki te whakawhere koe i tētahi atu ki tōu ake whakaaro, ka rongo ia, ka pānui rānei i āu kupu, kātahi ka whakaae ia he pai taua whakaaro.

*Te Tāhuhu o te Mātauranga. (2006). *Tirohia Kimihia: He Kete Wherawhera*. Te Whanganui-a-Tara: Huia Te Manu Tuku Kōrero.

Ngā Tohutoro

AVA PetPEP. *Benefits of Owning a Pet.*

I tangohia i te 22/08/07, mai i <http://www.heavenlyrain.com/avapetpep/website/benefits/index.html>

Benefits of School Uniforms.

I tangohia i te 22/08/07, mai i http://kids.lovetoknow.com/wiki/Benefits_of_School_Uniforms.

Biggs, B. (1990). *Me ako taatou i te reo Maaori: He Whakamaaramatanga moo ngaa mahi ako i te Reo Maaori.* He mahi whakamāori nā Cleve Barlow. Auckland: Billy King Holdings.

Derewianka, B. (1991). *Exploring How Texts Work.* Rozelle, N.S.W.: Primary English Teaching Association.

Education Department of Western Australia. (1997). *Writing Resource Book: First Steps.* Melbourne: Rigby Heinemann.

Harlow, R. (2004). *A Māori Reference Grammar.* Auckland: Pearson Education.

Joseph, D. (2004). Te kohinga pukapuka – *Te Kōrari.* Wellington: H.A.N.A Limited.

Joseph, D. (2006, June). *He Momo Kōrero Māori, He Momo Tuhinga, He Nuka Reo: Māori Text Types, Genre and Literary Devices.* Report for the Ministry of Education Māori Language Education Team. Palmerston North: Te Pūtahi-a-Toi.

Māori Language Commission Te Taura Whiri i te Reo Māori. (1996). *Te Matatiki: Contemporary Māori Words.* Auckland: Oxford University Press.

Māori Language Commission Te Taura Whiri i te Reo Māori. *Orthographic Conventions.*

I tangohia i te 29/11/05, mai i http://www.tetaurawhiri.govt.nz/_english/pub_e/conventions2.shtml

Ngata, H. M. (1993). *English-Māori Dictionary.* Te Whanganui-a-Tara: Te Pou Taki Kōrero.

Ryan, P. M. (2001). *The Reed Dictionary of Modern Māori.* Second edition. New Zealand: Reed Publishing.

The School Uniform Debate: An Image Consultant Weighs in.

I tangohia i te 22/08/07, mai i http://kids.lovetoknow.com/wiki/The_School_Uniform_Debate:_An_Image_Consultant_Weighs_In

Te Tāhuhu o te Mātauranga. (1996). *Te Reo Māori i roto i te Marautanga o Aotearoa.* Te Whanganui-a-Tara: Te Pou Taki Kōrero.

Te Tāhuhu o te Mātauranga. (2006). *Tirohia Kimihia: He Kete Wherawhera.* Te Whanganui-a-Tara: Huia Te Manu Tuku Kōrero.

Williams, H. W. (1975). *A Dictionary of the Māori Language.* Seventh edition. Wellington: Government Printer.



Te Matapaki

Mā te matapaki, ka whanake
ngā pūkenga tuhituhi.

Ngā Mātāpono me ngā Pūtake Whānui mō te Matapaki

E whā ngā mātāpono hei ārahi i te kaituhi me ngā tāngata āwhina ki te matapaki i āna tuhinga:

- Whakarongo ki te kaituhi.
- Ākina, tautokohia te kaituhi.
- Arahina te kaituhi ki te ara e tika ana mōna.
- E tika ana kia whai wāhi ngā tāngata āwhina ki te āwhina i te kaituhi, kaua te tuhinga.

E whā ngā pūtake whānui o te matapaki:

- Hei akiaki i te kaituhi kia whakaaturia ōna mōhiotanga kē, hei whai māramatanga hoki mō ngā mahi kei mua i a ia.
- Kia rangona e te kaituhi ngā whakawhitinga kōrero a tangata kē, kia mōhio ai ia i ngā mea kāore anō kia mau i a rātou.
- Hei āwhina i te kaituhi kia mārāma ia ki ngā āhuatanga tuhituhi kua tutuki i a ia i tāna tuhinga.
- Kia whakamōhio atu te kaituhi i ōna mōhiotanga ki te kaiako, mā tēnā te kaiako ka āwhina i a ia kia mau ngā momo rautaki tuhituhi e tika ana.

I te tuatahi, whakatauria te aronga, te huarahi me te momo matapaki.

Ngā Huarahi Matapaki

Ko ēnei ētahi o ngā huarahi pai mō te matapaki i te tuhinga:

- Takitahi
- Takirua me tētahi hoa
- Takirua me te kaiako
- Takitini

Ngā Momo Matapaki

He whakamārama i ngā pūtake o ngā momo matapaki

Matapaki mō te Kaupapa

E hāngai ana tēnei matapaki ki ngā mātauranga e hiahia ana te kaituhi kia mau i te kaupānui. Hei tauira, i te tuhinga takenga pūtaiao ka tuhi pea te kaituhi mō te take i pērā ai tētahi tū āhuatanga.

Ngā Pātai Ārahi

Ētahi pātai hei ārahi i ngā momo matapaki

- He aha te pūtake o te tuhinga?
- Mā wai te tuhinga?
- He aha tētahi tapanga mō te tuhinga?
- He aha ōu whakaaro matua mō te tuhinga?
- He aha ngā whakaaro ka tautoko i ōu whakaaro matua?
- Whakamāramatia mai ōu whakaaro.
- He mōhiotanga anō me rapu?
- He pātai atu anō āu mō te tuhinga?

Matapaki mō te Momo Tuhinga

E hāngai ana tēnei matapaki ki te momo tuhinga e tika ana mō ngā mātauranga ka whakaaturia. Hei tauira, i te tuhinga taki whaiaro ka ahu mai te hiahia i te kaituhi ki te tuhi mō tētahi wheako whaiaro ōna, ā, ka raupapahia tērā wheako i te taki.

- He aha te momo tuhinga e tika ana?
- He aha te tino take o tāu tuhinga e hiahia ana koe kia mau i te kaipānui?
- Kua whakaritea ngā whakaaro matua me ngā whakaaro tautoko?
- He tika rānei te raupapatanga o ngā mahi?
- Kua whai whakaaro ki ngā mātauranga katoa e tika ana mō te tuhinga?
- Ka aha i nāianei?

Matapaki mō ngā Momo Rautaki Tuhituhi

E hāngai ana tēnei matapaki ki ngā rautaki tuhituhi kua whakamahia e te kaituhi i a ia e tuhituhi ana, ā, nā te aha hoki i pērā ai. Ko te pūtake o tēnei matapaki ko te āwhina i te kaituhi ki te tāutu i ngā rautaki kua whakamahia kē e ia, ki te whakawhanake hoki i tāna āheinga ki te whakamahi i ētahi atu rautaki tuhituhi.

- He aha ngā rautaki tuhituhi i whakamahia e koe ki te timata i tāu tuhinga?
- He aha ētahi raruraru i puta i a koe e tuhi ana? I ahatia ērā raruraru e koe kia oti pai ai te mahi tuhituhi? He aha māku hei āwhina i a koe?
- I pēhea tāu kōwhiringa pūtake mō tāu tuhinga?
- I muri mai i te kōwhiringa pūtake i ngāwari noa iho te kimi whakaaro hei tautoko i taua pūtake?
- Kua rerekē pēhea nei āu rautaki tuhituhi?
- Kua kite au i ētahi kupu/rerenga kua whakarerekētia e koe. I pēhea tāu whakatau kia pērā ai te whakarerekē?

Matapaki mō te Arotake Tuhinga

He matapaki tēnei hei āwhina i te kaituhi ki te pānui i āna ake tuhinga mai i te tirohanga o te hunga pānui. Ka tuku pātai te kaituhi ki a ia anō mō te māramatanga, te painga me te tutukitanga o ana tuhinga ki te kaipānui.

- He aha ōu whakaaro mō te tuhinga?
- He kupu pai ake i ērā kua whakamahia? He kupu pai ake kia mau ai i te kaipānui te pānga/iho o te tuhinga?
- Kua tuhia katoatia ngā mātauranga e hiahia ana koe kia mau i te kaipānui?
- E tika ana te reo kua whakamahia i te tuhinga kia pai ai te kawenga o ngā whakaaro?
- He pai te raupapatanga o ōu whakaaro?
- Me whai āwhina te kaipānui kia mārāma pai ai ia ki āu tuhinga?

Matapaki mō te Whakatika Tuhinga

E hāngai ana tēnei matapaki ki ngā āhuatanga kua whakatikaina kē e te kaituhi, ki te whakatika hoki i ngā tikanga tuhituhi pēnei me te tātaki kupu, te kārawarawatanga me te takotoranga o ngā kupu.

- E tika ana te ia o te tuhinga?
- E tika ana te noho o ngā tohutō?
- He tika te whakatakotoranga o ngā rerenga tuhituhi?
- Kua tuhia e koe ngā kārawarawatanga i ngā wā, i ngā wāhi hoki e tika ana?
- Ko tēnei te tino kōunga o āu mahi tuhituhi?
- Kua tutuki i a koe tētahi o āu whāinga ako? Ka aro tāua ki ēhea o ngā whāinga ako i nāianei?

Matapaki mō te Whakaputa Tuhinga

E hāngai ana tēnei matapaki ki ngā momo whakatau e tika ana mō te whakaputa, arā, te tā tuhinga. Hei tauira, mā tēnei matapaki ka whakatauria mehemea ka tuhituhi mā te ringa, mā te rorohiko rānei me te whiriwhiri i ngā pikitia e tika ana mō te tuhinga.

- He aha te momo hanga o te tuhinga kua tā – he mahere, he pukapuka, he aha rānei?
- He aha tētahi ara kia tutuki pai ai te tā i te tuhinga?
- Ka tuhituhi koe mā te ringa, mā te rorohiko rānei?
- Mā wai e tā – māu, mā te kaiako, mā tētahi kaiāwhina rānei?
- He aha ētahi pikitia e pai ana?
- Ka meatia he pikitia kua tuhia ā-ringa, ā-rorohiko, he whakaahua rānei?

Te Tukanga Tuhituhi

Me toro te kaituhi ki mua, ki muri ki ngā wāhanga katoa kia pai ai te takoto o te tuhinga.

Te Whakarite Te whakatau, te whakarite whakaaro

- Tāutuhia te pūtake me ngā kaipānui
- Whakatauria te momo tuhinga
- Whiriwhiria tētahi tapanga kia hāngai pū ōu whakaaro ki te kaupapa
- Kohia ōu whakaaro
- Rapuhia te mātauranga
- Whakaritea ngā whakaaro matua me ngā whakaaro tautoko mō ngā wāhanga o te tuhinga

Te Whakatakoto Te waihanga tuhinga tuatahi

- Raupapahia ōu whakaaro me ngā mātauranga
- Waihangatia tāu tuhinga kia kitea te hononga o ngā whakaaro matua me ngā whakaaro tautoko
- I a koe e tuhi ana, me whakaaro hoki ki ētahi pātai e pā ana ki te pūtake o te tuhinga me ōna pānga

Te Whakamārama Te arotake, te whakamārama ake

- Pānuihia, ā, arotakengia ōu whakaaro me ngā mātauranga
- Toro atu ki tētahi/ētahi atu kia whai whakaaro arotake mai ki āu tuhinga, ā, whakamanahia ngā kōrero āwhina a te kaiarotake
- Pānuihia anō āu tuhinga kia arotakengia te pānga o te tuhinga ki te kaipānui
- Arotakengia ō tuhinga mā ēnei ara:
 - tīnīhia te raupapatanga o ngā whakaaro, o ngā kupu rānei
 - tīnīhia ngā kupu, ngā rerenga tuhituhi rānei kia pai ake te takoto o te tuhinga
 - tāpiritia atu he mātauranga anō

Te Whakatika Te whakatikatika i te reo

- Pānuihia anō tāu tuhinga
- Whakatikaina te reo o tāu tuhinga – te tātaki tika o ngā kupu, ngā tohutō, te wetewete reo me ngā kārawarawatanga

Te Whakaputa Te tā tuhinga

- Tāngia tāu tuhinga kia ngāwari noa iho te pānui, kia ātaahua hoki te takoto mā te kaipānui

Tuku atu, tuku mai Te tuku atu hei pānuitanga

- Tukuna tāu tuhinga kia pānuihia e tētahi/ētahi atu

He Pātai Ārahi

Mā te kaituhi, mā te kaipānui rānei ngā pātai nei.

- He aha te pūtake o te tuhinga?
- Mā wai te tuhinga?
- He aha te momo tuhinga?
- He aha tētahi tapanga mō te tuhinga?
- Whakamāramatia mai ōu whakaaro.
- He aha ōku/ōu whakaaro matua mō te tuhinga?
- He aha ngā whakaaro ka tautoko i ōku/ōu whakaaro matua?
- He mōhio tanga anō me rapu?

- He aha te tino take o te tuhinga e hiahia ana au/koe kia mau i te kaipānui?
- Kua tika te raupapatanga o ngā whakaaro matua me ngā whakaaro tautoko?
- Kua whai whakaaro ki ngā mātauranga katoa e tika ana mō te tuhinga?

- He aha te ariā matua o te tuhinga?
- Kua tuhia ngā mātauranga katoa e hiahia ana au/koe kia mau i te kaipānui?
- E tika ana te reo kua whakamahia i te tuhinga kia pai ai te kawenga o ngā whakaaro?
- He mārama te kaipānui ki te raupapatanga o ōku/ōu whakaaro?
- He kupu pai ake i ērā kua whakamahia?
- He kupu pai ake kia mau ai i te kaipānui ngā ariā o te tuhinga?
- Me whai āwhina te kaipānui kia mārama pai ai ia ki te tuhinga?

- E tika ana te ia o te tuhinga?
- E tika ana te noho o ngā tohutō?
- He tika te whakatakotoranga o ngā rerenga tuhituhi?
- Kua tuhia e au/koe ngā kārawarawatanga i ngā wā, i ngā wāhi hoki e tika ana?

- He aha tētahi ara kia tutuki pai ai te tā i te tuhinga?
- Ka tuhituhi au/koe mā te ringa, mā te rorohiko rānei?
- He aha ētahi pikitia, hoa hoa rānei e pai ana?

- He aha ki a koe te ariā matua o te tuhinga?
- He pātai āu mā te kaituhi?
- He pai ki a koe te tuhinga? He aha ai?
- E mārama ana koe ki ngā whakaaro o te kaituhi?

